

# 2025

## FACTBOOK



**THE STOCK EXCHANGE OF MAURITIUS LTD**  
(Member of the World Federation of Exchanges)

# THE STOCK EXCHANGE OF MAURITIUS LTD

(Member of the World Federation of Exchanges)



## FOREWORD

Statistics and data published in the SEM Factbook 2025 have been compiled with reasonable care and diligence. However, the Stock Exchange of Mauritius Ltd makes no representations, gives no warranty, disclaims all liability in respect thereof, and shall not be held liable for any damage, loss or cost incurred resulting from any error in the information or any use of the said information. Appropriate independent advice should be obtained before making any investment decision.

# FACTBOOK 2025

# CONTENTS

## PART 1 – OFFICIAL MARKET

### MARKET EVOLUTION SINCE INCEPTION

- TIME SERIES EVOLUTION
- SELECTED MARKET INDICATORS
- LISTINGS ON THE OFFICIAL MARKET
- EVOLUTION OF MARKET CAPITALISATION (DEC 1989-DEC 2024)
- EVOLUTION OF MARKET INDICES (1989-2024)

### MARKET AT A GLANCE

- OFFICIAL MARKET AT A GLANCE 2024
- SEMDEX/SEM-10 YEAR 2024
- SEMTRI (IN RS AND US \$) 2024
- SUMMARY FINANCIAL DATA FOR LISTED STOCKS

### COMPANIES' PERFORMANCE IN 2024

- TOP 10 COMPANIES IN TERMS OF MARKET CAPITALISATION
- TOP 10 SECURITIES IN TERMS OF TURNOVER
- TOP 10 SECURITIES IN TERMS OF VOLUME TRADED

### FOREIGN INVESTMENT

- FOREIGN INVESTMENTS IN 2024
- ACTIVITY ANALYSIS (FOREIGN V/S DOMESTIC)

## PART 2 – DEVELOPMENT & ENTERPRISE MARKET (DEM)

### MARKET EVOLUTION SINCE INCEPTION

- TIME SERIES EVOLUTION
- SELECTED MARKET INDICATORS
- LISTINGS ON THE DEM
- EVOLUTION OF MARKET CAPITALISATION (2006-2024)
- EVOLUTION OF MARKET INDICES (2006-2024)

### MARKET AT A GLANCE

- DEM AT A GLANCE 2024
- DEMEX/DEMTRI (Rs) YEAR 2024
- SUMMARY FINANCIAL DATA FOR LISTED SECURITIES

### COMPANIES' PERFORMANCE IN 2024

- TOP 10 COMPANIES IN TERMS OF MARKET CAPITALISATION
- TOP 10 COMPANIES IN TERMS OF TURNOVER
- TOP 10 COMPANIES IN TERMS OF VOLUME TRADED

### FOREIGN INVESTMENT

- FOREIGN INVESTMENTS IN 2024

# MARKET EVOLUTION SINCE INCEPTION

## TIME SERIES EVOLUTION

OFFICIAL MARKET	1989	1990	1991	1992	1993	1994	1995
No. of listed Companies (Equities) (End of Period)	6	13	19	21	29	34	39
No of listed Securities	6	17	23	25	33	38	48
Market Capitalisation - SEM-ASI (Rs) (End of Period)	-	-	-	-	-	-	-
Change in SEM-ASI Market Capitalisation (%)	-	-	-	-	-	-	-
Market Capitalisation - SEMDEX (Rs) (End of Period)	1,437,084,250	3,792,727,253	4,862,475,674	6,598,876,234	14,907,260,928	29,513,854,604	27,817,756,013
Change in SEMDEX Market Capitalisation (%)		163.92	28.21	35.71	125.91	97.98	(5.75)
SEM-ASI	-	-	-	-	-	-	-
Change in SEM-ASI							
SEMTRI-ASI	-	-	-	-	-	-	-
Change in SEMTRI-ASI							
SEMDEX (End of Period)	117.34	171.23	154.17	183.18	302.63	476.10	344.44
Change in SEMDEX (%)	-	45.93	-9.96	18.82	65.21	57.32	-27.65
SEM-10 (End of Period)	-	-	-	-	-	-	-
Change in SEM-10 (%)	-	-	-	-	-	-	-
SEMTRI (in Rs terms, End of Period)	118.95	183.80	173.11	217.41	375.45	608.24	454.97
Change in SEMTRI - Rs (%)		54.52	-5.82	25.59	72.69	62.00	-25.20
SEMTRI (in US US\$ terms, End of Period)	121.97	201.34	177.19	204.53	316.13	520.87	387.71
Change in SEMTRI - US \$ (%)		65.07	(11.99)	15.43	54.56	64.76	(25.56)
SEMSI	-	-	-	-	-	-	-
SEMBI							
SEM-AFRIDEX							
Annual Turnover (Rs)	14,259,850	88,535,101	81,242,185	158,600,402	691,626,617	1,519,983,072	1,220,601,055
Change in Turnover (%)		520.87	-8.24	95.22	336.08	119.77	-19.70
Turnover per session (Rs)	548,456	1,735,982	1,624,844	1,602,024	7,130,171	10,340,021	8,191,953
Annual Traded Volume	613,505	3,551,514	4,520,992	8,721,139	37,342,856	50,635,961	59,395,655
Change in Traded Volume (%)		478.89	27.30	92.90	328.19	35.60	17.30
P/E Ratio (End of Period)	6.56	6.26	6.12	8.72	13.64	20.11	10.85
Dividend Yield - % (End of Period)	5.42	4.17	5.11	4.29	3.09	2.08	3.20
No. of Trading Sessions	26	51	50	99	97	147	149
Weekly Frequency	1	1	1	2	2	2:3	3
US\$ Rate in Rs, (End of Period)	15.410	14.890	15.710	15.580	17.700	18.080	17.800
Annual Turnover (US\$)	925,363	5,945,944	5,171,368	10,179,743	39,074,950	84,069,860	68,573,093
Average Turnover per session (US\$)	35,591	116,587	103,427	102,826	402,835	571,904	460,222
Market Cap in US\$ - SEM-ASI (End of Period)							
Market Cap in US\$ - SEMDEX (End of Period)	93,256,603	254,716,404	309,514,683	423,547,897	842,218,132	1,632,403,463	1,562,795,282
Capital Raised (Rs)	-	235,967,000	125,489,528	1,343,253,426	704,061,566	772,314,096	1,629,055,884
No. of Investment Dealers	10	11	11	11	11	11	11

# MARKET EVOLUTION SINCE INCEPTION

## TIME SERIES EVOLUTION

OFFICIAL MARKET	1996	1997	1998	1999	2000	2001	2002
No. of listed Companies (Equities) (End of Period)	42	42	40	43	42	40	40
No of listed Securities	51	57	58	62	66	62	53
Market Capitalisation - SEM-ASI (Rs) (End of Period)	-	-	-	-	-	-	-
Change in SEM-ASI Market Capitalisation (%)	-	-	-	-	-	-	-
Market Capitalisation - SEMDEX (Rs) (End of Period)	33,376,740,885	36,934,879,316	45,335,829,298	41,731,973,736	37,034,909,667	32,147,404,156	38,641,073,426
Change in SEMDEX Market Capitalisation (%)	19.98	10.66	22.75	(7.95)	(11.26)	(13.20)	20.20
SEM-ASI	-	-	-	-	-	-	-
Change in SEM-ASI	-	-	-	-	-	-	-
SEMTRI-ASI	-	-	-	-	-	-	-
Change in SEMTRI-ASI	-	-	-	-	-	-	-
SEMDEX (End of Period)	353.46	391.12	465.60	435.69	390.10	340.92	399.26
Change in SEMDEX (%)	2.62	10.65	19.04	-6.42	-10.46	-12.61	17.11
SEM-10 (End of Period)	-	-	111.70	105.16	94.68	74.65	88.45
Change in SEM-10 (%)	-	-	-	-5.85	-9.97	-21.16	18.49
SEMTRI (in Rs terms, End of Period)	485.32	557.28	691.29	680.04	650.71	626.75	812.56
Change in SEMTRI - Rs (%)	6.67	14.83	24.05	-1.63	-4.31	-3.68	29.65
SEMTRI (in US US\$ terms, End of Period)	380.81	391.14	435.73	417.17	365.14	323.58	433.96
Change in SEMTRI - US \$ (%)	(1.78)	2.71	11.40	(4.26)	(12.47)	(11.38)	34.11
SEMSI	-	-	-	-	-	-	-
SEMBI	-	-	-	-	-	-	-
SEM-AFRIDEX	-	-	-	-	-	-	-
Annual Turnover (Rs)	1,601,685,409	2,996,967,637	2,556,083,730	1,978,180,320	2,045,247,037	3,292,410,159	1,722,521,587
Change in Turnover (%)	31.22	87.11	-14.71	-22.61	3.39	60.98	-47.68
Turnover per session (Rs)	10,822,199	18,731,048	10,306,789	7,912,721	8,280,352	13,383,781	6,945,652
Annual Traded Volume	91,996,746	164,088,593	98,859,087	85,265,541	186,793,915	139,068,367	145,473,851
Change in Traded Volume (%)	54.89	78.36	(39.75)	(13.75)	119.07	(25.55)	4.61
P/E Ratio (End of Period)	11.30	12.86	11.56	8.98	6.40	5.91	5.33
Dividend Yield - % (End of Period)	3.28	3.62	3.88	5.03	6.73	8.30	9.83
No. of Trading Sessions	148	160	248	250	247	246	248
Weekly Frequency	3	3:5 ^	5	5	5	5	5
US\$ Rate in Rs, (End of Period)	19.710	21.050	24.507	25.395	27.730	30.275	29.18
Annual Turnover (US\$)	81,262,578	142,373,759	104,300,148	77,896,449	73,755,753	108,750,129	59,030,897
Average Turnover per session (US\$)	549,071	889,836	420,565	311,586	298,606	442,074	238,028
Market Cap in US\$ - SEM-ASI (End of Period)	-	-	-	-	-	-	-
Market Cap in US\$ - SEMDEX (End of Period)	1,693,391,217	1,754,626,096	1,849,913,465	1,643,314,579	1,335,553,901	1,061,846,545	1,324,231,440
Capital Raised (Rs)	375,300,000	1,725,000,000	1,265,000,000	1,259,350,000	1,457,183,326	44,000,000	-
No. of Investment Dealers	11	11	11	11	11	11	11

# MARKET EVOLUTION SINCE INCEPTION

## TIME SERIES EVOLUTION

OFFICIAL MARKET	2003	2004	2005	2006	2007	2008	2009
No. of listed Companies (Equities) (End of Period)	39	40	41	41	41	40	40
No of listed Securities	50	52	52	45	45	44	59
Market Capitalisation - SEM-ASI (Rs) (End of Period)	-	-	-	-	-	-	-
Change in SEM-ASI Market Capitalisation (%)	-	-	-	-	-	-	-
Market Capitalisation - SEMDEX (Rs) (End of Period)	51,229,930,441	67,033,922,981	80,038,466,322	116,981,444,907	173,094,638,415	109,300,409,347	151,212,328,913
Change in SEMDEX Market Capitalisation (%)	32.58	30.85	19.40	46.16	47.97	(36.86)	38.35
SEM-ASI	-	-	-	-	-	-	-
Change in SEM-ASI	-	-	-	-	-	-	-
SEMTRI-ASI	-	-	-	-	-	-	-
Change in SEMTRI-ASI	-	-	-	-	-	-	-
SEMDEX (End of Period)	549.58	710.77	804.03	1,204.46	1,852.21	1182.74	1660.87
Change in SEMDEX (%)	37.65	29.33	13.12	49.80	53.78	-36.14	40.43
SEM-10 (End of Period)	119.39	149.67	175.43	264.41	477.40	267.22	360.75
Change in SEM-10 (%)	34.98	25.36	17.21	50.72	80.55	-44.03	35.00
SEMTRI (in Rs terms, End of Period)	1,194.85	1,619.92	1,951.83	3,060.71	4,868.61	3233.74	4712.7
Change in SEMTRI - Rs (%)	47.05	35.58	20.49	56.81	59.07	-33.58	45.74
SEMTRI (in US US\$ terms, End of Period)	703.96	894.49	996.55	1437.32	2621.77	1563.51	2395.98
Change in SEMTRI - US \$ (%)	62.22	27.07	11.41	44.23	82.41	(40.36)	53.24
SEMSI	-	-	-	-	-	-	-
SEMBI	-	-	-	-	-	-	-
SEM-AFRIDEX	-	-	-	-	-	-	-
Annual Turnover (Rs)	2,989,174,317	2,819,024,443	4,547,982,065	5,992,247,910	11,825,521,416	11,405,377,045	10,473,711,039
Change in Turnover (%)	73.53	-5.69	61.33	31.76	97.35	-3.55	-8.17
Turnover per session (Rs)	11,861,803	11,098,521	18,264,988	23,873,498	47,302,086	45,989,424	41,894,844
Annual Traded Volume	168,085,167	146,358,080	271,573,444	221,369,601	257,596,531	230,384,358	226,321,733
Change in Traded Volume (%)	15.54	(12.93)	85.55	(18.49)	16.36	(10.56)	(1.76)
P/E Ratio (End of Period)	8.30	9.93	7.98	11.95	13.26	6.17	10.74
Dividend Yield - % (End of Period)	5.74	4.85	4.64	3.66	2.80	5.14	3.5
No. of Trading Sessions	252	254	249	251	250	248	250
Weekly Frequency	5	5	5	5	5	5	5
US\$ Rate in Rs, (End of Period)	26.23	27.98	30.25	33.04	28.68	32.69	31.4
Annual Turnover (US\$)	113,981,861	100,751,410	150,346,515	181,363,436	412,326,409	348,894,985	333,557,676
Average Turnover per session (US\$)	452,309	396,659	603,801	722,563	1,649,306	1,406,835	1,334,231
Market Cap in US\$ - SEM-ASI (End of Period)	-	-	-	-	-	-	-
Market Cap in US\$ - SEMDEX (End of Period)	1,953,476,852	2,395,779,949	2,645,899,713	3,540,600,633	6,035,377,908	3,343,542,654	4,815,679,265
Capital Raised (Rs)	-	970,928,004	-	98,400,000	-	100,543,361	662,100,620
No. of Investment Dealers	11	11	11	12	12	11	10

# MARKET EVOLUTION SINCE INCEPTION

## TIME SERIES EVOLUTION

OFFICIAL MARKET	2010	2011	2012	2013	2014	2015	2016
No. of listed Companies (Equities) (End of Period)	37	38	41	43	46	51	56
No of listed Securities	47	54	65	82	90	96	115
Market Capitalisation - SEM-ASI (Rs) (End of Period)	-	-	-	-	-	-	338,066,317,310
Change in SEM-ASI Market Capitalisation (%)	-	-	-	-	-	-	-
Market Capitalisation - SEMDEX (Rs) (End of Period)	177,996,156,423	171,510,090,486	175,174,078,737	212,928,979,141	229,893,763,700	201,687,047,615	216,110,562,923
Change in SEMDEX Market Capitalisation (%)	17.71	(3.64)	2.14	21.55	7.97	(12.27)	7.15
SEM-ASI	-	-	-	-	-	-	1,852.57
Change in SEM-ASI	-	-	-	-	-	-	-
SEMTRI-ASI	-	-	-	-	-	-	6387.96
Change in SEMTRI-ASI	-	-	-	-	-	-	-
SEMDEX (End of Period)	1,967.45	1,888.38	1,732.06	2,095.69	2,073.72	1,811.07	1,808.37
Change in SEMDEX (%)	18.46	-4.02	-8.28	20.99	-1.05	-12.67	-0.15
SEM-10 (End of Period)	373.22	350.33	337.28	403.64	385.51	346.35	345.04
Change in SEM-10 (%)	3.46	-6.13	-3.73	19.68	-4.49	-10.16	-0.38
SEMTRI (in Rs terms, End of Period)	5,747.85	5,673.68	5,364.29	6,673.93	6,795.35	6,109.19	6,309.09
Change in SEMTRI - Rs (%)	21.97	-1.29	-5.45	24.41	1.82	-10.10	3.27
SEMTRI (in US US\$ terms, End of Period)	2,906.28	3,000.01	2,729.02	3,436.43	3,327.81	2,631.14	2,744.60
Change in SEMTRI - US \$ (%)	21.30	3.23	(9.03)	25.92	(3.16)	(20.93)	4.31
SEMSI	-	-	-	-	-	97.29	100.44
SEMBI	-	-	-	-	-	-	-
SEM-AFRIDEX	-	-	-	-	-	-	-
Annual Turnover (Rs)	11,760,281,284	14,959,150,277	9,461,550,769	10,563,500,449	16,548,968,933	17,988,300,787	13,644,910,434
Change in Turnover (%)	12.28	27.20	-36.75	11.65	56.66	8.70	-24.15
Turnover per session (Rs)	46,667,783	60,076,909	38,305,874	42,594,760	66,999,874	71,953,203	54,146,470
Annual Traded Volume	339,419,904	243,902,662	227,694,945	1,702,719,731	2,616,694,625	3,965,970,523	1,980,514,221
Change in Traded Volume (%)	49.97	(28.14)	(6.65)	647.81	53.68	51.56	(50.06)
P/E Ratio (End of Period)	14.05	11.29	11.30	14.16	9.92	11.83	16.39
Dividend Yield - % (End of Period)	2.5	3.04	3.39	2.58	2.99	3.73	3.29
No. of Trading Sessions	252	249	247	248	247	250	252
Weekly Frequency	5	5	5	5	5	5	5
US\$ Rate in Rs, (End of Period)	31.34	29.98	30.9	30.53	32.10	36.50	36.75
Annual Turnover (US\$)	375,248,286	498,970,990	306,199,054	346,003,945	515,544,204	492,830,159	371,290,080
Average Turnover per session (US\$)	1,489,081	2,003,900	1,239,672	1,395,177	2,087,223	1,971,321	1,473,373
Market Cap in US\$ - SEM-ASI (End of Period)	-	-	-	-	-	-	9,199,083,464
Market Cap in US\$ - SEMDEX (End of Period)	5,679,519,988	5,720,816,894	5,669,064,037	6,974,417,921	7,161,799,492	5,525,672,537	5,880,559,535
Capital Raised (Rs)	5,511,860,168	3,158,237,416	6,143,291,644	23,246,504,976	23,076,921,568	44,099,971,808	34,619,926,156
No. of Investment Dealers	10	10	11	12	12	11	11

# MARKET EVOLUTION SINCE INCEPTION

## TIME SERIES EVOLUTION

OFFICIAL MARKET	2017	2018	2019	2020	2021	2022	2023	2024
No. of listed Companies (Equities) (End of Period)	57	60	62	58	59	54	53	56
No of listed Securities	135	151	163	158	150	145	143	135
Market Capitalisation - SEM-ASI (Rs) (End of Period)	355,377,826,937	354,103,053,821	354,250,419,745	294,600,362,320	339,445,263,702	323,110,130,419.09	320,650,176,259.73	382,499,532,116.38
Change in SEM-ASI Market Capitalisation (%)	5.12	(0.36)	0.04	(16.84)	15.22	(4.81)	(0.76)	19.29
Market Capitalisation - SEMDEX (Rs) (End of Period)	265,842,065,127	265,654,285,047	263,717,959,268	199,468,945,378	268,855,116,178	258,047,179,606.94	257,808,650,728.12	317,597,792,616.70
Change in SEMDEX Market Capitalisation (%)	23.01	(0.07)	(0.73)	(24.36)	34.79	(4.02)	(0.09)	23.19
SEM-ASI	2,221.82	2,026.43	2,004.97	1,643.74	1,935.51	1,891.03	1,872.84	2,149.11
Change in SEM-ASI	19.93	-8.79	-1.06	-18.02	17.75	(2.30)	(0.96)	14.75
SEMTRI-ASI	7913.75	7478.64	7735.67	6455.89	7853.69	7921.81	8193.78	9,876.85
Change in SEMTRI-ASI	23.89	-5.50	3.44	-16.54	21.65	0.87	3.43	20.54
SEMDEX (End of Period)	2,202.14	2,218.52	2,177.09	1,648.39	2,097.89	2055.25	2038.10	2403.1346
Change in SEMDEX (%)	21.77	0.74	-1.87	-24.28	27.27	(2.03)	(0.83)	17.91
SEM-10 (End of Period)	421.82	425.72	429.86	309.70	388.00	373.02	366.97	448.6274253
Change in SEM-10 (%)	22.25	0.92	0.97	-27.95	25.28	(3.86)	(1.62)	22.25
SEMTRI (in Rs terms, End of Period)	7,906.46	8,197.69	8,309.75	6,363.64	8,345.17	8,427.63	8,739.93	10,839.55
Change in SEMTRI - Rs (%)	25.32	3.68	1.37	-23.42	31.14	0.99	3.71	24.02
SEMTRI (in US US\$ terms, End of Period)	3,689.32	3,749.53	3,580.45	2,541.59	3,027.67	3020.78	3118.14	3,622.32
Change in SEMTRI - US \$ (%)	34.42	1.63	(4.51)	(29.01)	19.13	(0.23)	3.22	16.17
SEMSI	120.43	122.22	124.30	90.83	114.20	110.62	108.26	128.87
SEMBI	99.68	98.08	99.04	101.06	103.09	100.54	103.18	104.39
SEM-AFRIDEX		98.78	103.39	100.23	103.45	100.22	99.47	99.65
Annual Turnover (Rs)	15,408,446,558	13,402,614,143	13,852,402,545	15,470,534,149	13,724,862,433	14,789,665,546	11,792,828,819	13,757,886,663
Change in Turnover (%)	12.92	-13.02	3.36	11.68	-11.28	7.76	-20.26	16.66
Turnover per session (Rs)	61,881,311	54,482,171	56,772,142	63,403,828	55,342,187	59,158,662	47,360,758	55,926,369
Annual Traded Volume	651,229,478	558,624,212	552,452,473	733,218,544	728,232,233	427,265,241	387,565,184	495,683,502
Change in Traded Volume (%)	(67.12)	(14.22)	(1.10)	32.72	(0.68)	(41.33)	(9.29)	27.90
P/E Ratio (End of Period)	12.49	16.79	13.46	11.66	14.03	10.2	6.45	6.8
Dividend Yield - % (End of Period)	2.96	3.17	4.35	2.30	3.09	3.62	4.29	4.22
No. of Trading Sessions	249	246	244	244	248	250	249	246
Weekly Frequency	5	5	5	5	5	5	5	5
US\$ Rate in Rs, (End of Period)	33.69	34.37	36.48	39.36	43.33	43.86	44.06	47.04
Annual Turnover (US\$)	457,373,224	389,962,296	379,684,315	393,042,203	316,759,271	337,224,743	267,641,705	292,465,863
Average Turnover per session (US\$)	1,836,840	1,585,213	1,556,083	1,610,829	1,277,255	1,348,899	1,074,866	1,188,886
Market Cap in US\$ - SEM-ASI (End of Period)	10,548,779,333	10,302,978,086	9,709,747,279	7,484,575,146	7,834,135,653	7,367,355,962	7,277,249,700	8,131,194,747
Market Cap in US\$ - SEMDEX (End of Period)	7,891,064,298	7,729,473,800	7,228,318,147	5,067,679,820	6,204,969,332	5,883,831,078	5,851,042,865	6,751,510,228
Capital Raised (Rs)	52,183,268,963	24,547,968,725	8,202,209,256	19,580,863,651	21,449,070,319	3,496,212,109.30	19,649,919,519.45	10,903,543,854.10
No. of Investment Dealers	9	8	9	9	9	9	8	7

### Notes:

1. SEM-10 replaced the SEM-7 index as from 3rd October 2014
2. SEMSI - launched on 7th September 2015
3. The SEM-ASI and the SEMTRI-ASI were launched on the 12th September 2016 and 10th October 2016 respectively.
4. The SEMBI was launched on 14th November 2017
5. The SEM-AFRIDEX was launched on 1st November 2018



# MARKET EVOLUTION SINCE INCEPTION

## SELECTED MARKET INDICATORS

YEAR	GDP AT CURRENT MARKET PRICES (RS MILLION)	MARKET CAPITALISATION (End of period) (RS MILLION)	MKTCAP/GDP (%)	TURNOVER (RS MILLION)	TURNOVER/MKTCAP (%)	TURNOVER/GDP (%)
1989	33,274	1,437.08	4.32	14	0.97	0.04
1990	39,440	3,792.73	9.62	89	2.35	0.23
1991	44,717	4,862.48	10.87	81	1.67	0.18
1992	50,180	6,598.88	13.15	159	2.41	0.32
1993	57,592	14,907.26	25.88	692	4.64	1.20
1994	63,906	29,513.85	46.18	1,520	5.15	2.38
1995	70,246	27,817.76	39.60	1,221	4.39	1.74
1996	79,365	33,376.74	42.05	1,602	4.80	2.02
1997	88,175	36,934.88	41.89	2,997	8.11	3.40
1998	100,042	45,335.83	45.32	2,556	5.64	2.55
1999	108,076	41,731.97	38.61	1,978	4.74	1.83
2000	120,291	37,034.91	30.79	2,045	5.52	1.70
2001	132,146	32,147.40	24.33	3,292	10.24	2.49
2002	142,485	38,641.07	27.12	1,723	4.46	1.21
2003	162,291	51,229.93	31.57	2,989	5.83	1.84
2004	180,908	67,033.92	37.05	2,819	4.21	1.56
2005	191,393	80,038.47	41.82	4,548	5.68	2.38
2006	213,444	116,981.44	54.81	5,992	5.12	2.81
2007	243,998	173,094.64	70.94	11,826	6.83	4.85
2008	274,316	109,300.41	39.84	11,405	10.43	4.16
2009	282,354	151,212.33	53.55	10,474	6.93	3.71
2010	299,170	177,996.16	59.50	11,760	6.61	3.93
2011	323,011	171,510.09	53.10	14,959	8.72	4.63
2012	343,835	175,174.08	50.95	9,462	5.40	2.75
2013	366,479	212,928.98	58.10	10,564	4.96	2.88
2014	387,281	229,893.76	59.36	16,549	7.20	4.27
2015	406,636	201,687.05	49.60	17,988	8.92	4.42
2016	434,765	338,066.32	77.76	13,645	4.04	3.14
2017	457,201	355,377.83	77.73	15,408	4.34	3.37
2018	481,256	354,103.05	73.58	13,403	3.79	2.79
2019	498,254	354,250.42	71.10	13,852	3.91	2.78
2020	448,874	294,600.36	65.63	15,471	5.25	3.45
2021	478,807	339,445.26	70.89	13,725	4.04	2.87
2022	572,111	323,110.13	56.48	14,790	4.58	2.59
2023	651,747	320,650.18	57.22	11,792	3.16	1.81
2024	698,537	382,499.53	54.76	13,758	3.60	1.97

# MARKET EVOLUTION SINCE INCEPTION

## LISTINGS ON THE OFFICIAL MARKET

		Date of Listing	Issue Price (Rs)	Closing Price (Rs) on First Trading day	Number of shares / Bonds Listed
<b>1989</b>					
1	The Mauritius Commercial Bank Ltd	05.07.89	32.00	34.90	14,565,991
2	The Mauritius Development Investment Trust Co. Ltd	05.07.89	5.50	5.80	20,116,250
3	Mauritius Stationery Manufacturers Ltd	05.07.89	25.00	27.50	2,412,000
4	Mon Trésor & Mon Désert Ltd	05.07.89	21.00	22.40	13,639,500
5	The United Basalt Products Ltd	05.07.89	12.80	13.50	7,175,833
6	The Mauritius Chemical & Fertilizer Industry Ltd	13.12.89	10.00	10.50	14,670,945
<b>1990</b>					
7	Mon Désert Alma Ltd (O)	Ord :17.01.90	38.00	41.80	1,799,178
8	Mon Désert Alma Ltd (P)	Pref :24.01.90	38.00	43.50	395,322
9	ENL Land Ltd- Ex Savannah (O)	Ord :24.01.90	40.00	46.00	4,073,353
10	ENL Land Ltd- Ex Savannah (P)	Pref :24.01.90	40.00	44.00	318,683
11	The Mauritius Oil Refineries Ltd	21.02.90	5.00	5.50	8,878,731
12	Rogers & Co. Ltd	27.06.90	55.00	60.00	13,442,416
13	ENL Commercial Ltd ( Ex - GIDC)	Ord :04.07.90	2.70	3.00	14,627,000
		Pref :04.07.90	2.40	2.60	3,573,064
14	Courts ( Mtius ) Ltd	12.09.90	10.00	10.50	18,000,000
15	Mauritius Leasing Co. Ltd (12.5%)	28.11.90	1000.00	1020.00	91,707
16	Swan Insurance Co. Ltd	19.12.90	18.50	21.00	4,739,535
<b>1991</b>					
17	Harel Mallac & Co. Ltd	20.02.91	30.00	30.00	5,629,694
18	Harel Frères & Co. Ltd	20.02.91	30.00	30.00	13,037,550
19	The Mount Sugar Estates Co. Ltd	27.02.91	17.00	17.00	11,181,200
20	Compagnie des Magasins Populaires Ltee	06.03.91	10.00	11.50	2,193,500
21	Shell (Mauritius) Ltd - p/p	13.11.91	5.00	5.40	29,322,252
22	United Docks Ltd	27.11.91	10.00	20.10	9,600,000
<b>1992</b>					
23	Policy Ltd - p/p	08.12.92	4.50	5.30	15,200,000
24	Consolidated Investment Trust Ltd	17.12.92	5.10	5.10	25,000,000
<b>1993</b>					
25	Sun Resorts Ltd	26.01.93	21.00	21.00	72,011,314
26	British American Insurance Co. Ltd	09.02.93	4.80	4.80	50,000,000
27	Liberty Investment Trust Ltd~	22.06.93	10.00	12.20	2,625,000
28	Mauritius Breweries Ltd	10.06.93	60.00	72.50	5,043,000
29	Plastic Industry Ltd	15.07.93	19.00	27.00	2,000,000
30	National Investment Trust Ltd	29.07.93	10.00	11.10	40,000,000
31	Mauritius Union Assurance Co. Ltd	14.12.93	40.00	55.50	2,530,000
32	Mauritian Eagle Insurance Co Ltd	16.12.93	45.00	50.00	2,666,666

# MARKET EVOLUTION SINCE INCEPTION

## LISTINGS ON THE OFFICIAL MARKET

		Date of Listing	Issue Price (Rs)	Closing Price (Rs) on First Trading day	Number of shares / Bonds Listed
<b>1994</b>					
33	Belle Mare Holding Co. Ltd	07.03.94	55.50	55.50	4,266,776
34	Ireland Blyth Ltd (p/p)	17.08.94	12.00	25.00	71,438,333
35	Fincorp Investment Ltd	31.08.94	80.00	80.00	8,010,324
36	Automatic Systems Ltd	12.10.94	50.00	70.00	3,535,000
37	Gamma Civic Ltd	30.11.94	58.00	65.00	4,100,000
<b>1995</b>					
38	Lazard Birla India Investment Trust PLC	10.01.95	1.00	1.00	51,980,775
39	Caudan Development Ltd (13%)	16.01.95	1000.00	1000.00	232,722
40	Air Mauritius Ltd (p/p)	17.02.95	30.00	35.00	51,152,500
41	State Bank of Mauritius Ltd	30.06.95	8.00	8.20	382,500,000
42	Mauritius Fund Ltd	12.07.95	\$12.50	\$12.50	2,475,100
43	Sun Resorts Ltd (7.5% Cumulative Pref) p/p	24.07.95	5.00	5.00	50,000,000
44	Grand Baie Hotel Ltd	24.11.95	32.00	35.10	20,200,000
<b>1996</b>					
45	Promotion and Development Ltd	17.01.96	20.00	25.00	30,000,000
46	Promotion and Development Ltd - p/p	17.01.96	12.00	16.00	12,500,000
47	Finlease Company Ltd (12% Debentures)	24.01.96	1000.00	1060.00	250,000
48	Innodis Ltd	28.02.96	17.00	17.00	36,730,266
49	Mauritius Leasing Co. Ltd (6th Series 11% Debentures)	17.04.96	1000.00	1010.00	100,000
50	New Mauritius Hotels Ltd	12.06.96	28.00	30.00	100,000,000
<b>1997</b>					
51	Finlease Company Ltd (10.5% Debentures)	24.01.97	1000.00	1010.00	125,000
52	Rogers (10.5% Debentures)	28.04.97	1000.00	1012.00	250,000
53	Gamma Civic Ltd ( 10.75% Debentures)	02.07.97	1000.00	1007.00	200,000
54	Innodis Ltd - (Ex Happy World Foods Ltd) (10.5% Debentures)	15.09.97	1000.00	1009.00	250,000
55	Sun Resorts Ltd (10% Debentures)	08.10.97	1000.00	1000.00	750,000
56	New Mauritius Hotels Ltd - (10% Debentures)	29.10.97	1000.00	1000.00	750,000
57	Phoenix Camp Minerals Ltd (10.25% Debentures)	24.11.97	1000.00	1001.00	150,000
<b>1998</b>					
58	Compagnie Mauricienne de Textiles Ltd (10.5% Debentures)	21.01.98	1000.00	1000.00	325,000
59	Mauritius Union Assurance Ltd(10% Debentures)	02.03.98	1000.00	1000.00	110,000
60	Mauritius Leasing Co Ltd (10% Debentures)	06.05.98	1000.00	1000.00	180,000
61	Rogers & Co Ltd (9.5% Debentures)	13.05.98	1000.00	1000.00	400,000
62	Caudan Development Ltd (10% Debentures)	29.06.98	1000.00	1000.00	250,000

# MARKET EVOLUTION SINCE INCEPTION

## LISTINGS ON THE OFFICIAL MARKET

		Date of Listing	Issue Price (Rs)	Closing Price (Rs) on First Trading day	Number of shares / Bonds Listed
<b>1999</b>					
63	Mauritius Leasing Co Ltd - 8th Series (12% Debentures)	14.06.99	1000.00	1000.00	200,000
64	Finlease Company Ltd - 1 <sup>st</sup> Series (11.75% Debentures)	23.08.99	1000.00	1000.00	200,000
65	Delphis Bank Ltd	29.12.99	4.00	4.15	300,000,000
<b>2000</b>					
66	Finlease Company Ltd - 2nd Series (11.75% Debentures)	28.01.2000	1000.00	1000.00	150,000
67	Harel Freres Ltd - F.I.R	07.04.2000	1000.00	1000.00	330,000
68	Mauritius Leasing Co Ltd - 9th Series (12% Debentures)	07.06.2000	1000.00	1016.00	250,000
69	BNPI Leasing Co Ltd	01.08.2000	1000.00	1052.00	155,000
<b>2002</b>					
70	Caudan Development Ltd	29.07.2002	0.80	0.80	819,520,000
<b>2003</b>					
71	B A Investment Ltd	07.07.2003	3.75	3.80	91,099,397
<b>2004</b>					
72	Mauritius Leasing Co Ltd	07.02.2004	2.50	2.50	300,000,000
<b>2005</b>					
73	Naiade Resorts Ltd	23.11.2005	49.50	49.90	86,256,873
<b>2007</b>					
74	Dale Capital Group Ltd	28.12.2007	USD 5.00	USD 5.00	5,940,000
<b>2011</b>					
75	Lux Island Resorts Ltd - Partly Paid Convertible Bond (9% Debentures)	31.01.2011	5.00	5.00	50,000,000
76	Go Life International PCC	07.07.2011	USD 0.10	USD 0.10	96,650,000
<b>2012</b>					
77	Evisa Investments Ltd (GBL 1 Company)	07.03.2012	USD 5.45	USD 5.45	1,000,000
78	Bramer Banking Corporation Ltd	09.05.2012	9.50	10.00	901,294,737
79	Rockcastle Global Real Estate Company Ltd (GBL 1 Company)	05.06.2012	USD 1	USD 1	6,201,000
80	Alteo Limited	31.07.2012	30.40	31.90	318,492,120
81	Omicane Ltd - Multicurrency Medium Term Note Programme	17.08.2012	1,000,000	1,000,000.00	1,080
82	CIM Financial Services Ltd	30.10.2012	4.45	5.50	680,522,310
83	Colina Holdings Ltd	24.12.2012	USD 1.00	USD 1.00	1,000,000

# MARKET EVOLUTION SINCE INCEPTION

## LISTINGS ON THE OFFICIAL MARKET

		Date of Listing	Issue Price (Rs)	Closing Price (Rs) on First Trading day	Number of shares / Bonds Listed
<b>2013</b>					
84	Omnicare Ltd - Notes- 2nd Issue	21.01.2013	100000.00	100000.00	9,200
85	Le Meritt Holdings PCC	24.01.2013	10.00	11.00	75,873,782
86	Sanlam Africa Core Real Estate Investments Ltd	16.05.2013	USD 5.00	USD 5.00	9,100,001
87	New Gold Issuer Limited - Exchange Traded Fund	26.07.2013	-	400.00	400,000
88	The Mauritius Commercial Bank Ltd - Floating Rate Notes	22.08.2013	1,000.00	1,011.71	4,500,000
89	United Basalt Products - Bond	04.11.2013	100.00	100.03	10,000,000
<b>2014</b>					
90	BlueLife Limited	08.01.2014	9.14	10.90	425,342,317
91	CIEL Limited	04.02.2014	7.00	7.88	1,576,175,766
92	Atlantic Leaf Properties Limited	25.03.2014	GBP 1	GBP 1	2,001,000
93	MCB Group Ltd	03.04.2014	-	-	238,002,634
94	Lottotech Ltd	11.06.2014	10.00	11.90	340,000,000
95	SBM Holdings Ltd	03.10.2014	-	-	30,374,022,300
96	New Frontier Properties Ltd	28.11.2014	USD 1	USD 1	938,736
97	New Plat Secuties	24.02.2014	-	434.25	400,000
98	S&P GIVI South Africa top 50 Index - ETF	06.10.2014	-	135.92	100,000
99	State Bank of Mauritius Ltd - Class A 1 Series Bond	25.03.2014	10,000.00	9,999.60	150,000
100	State Bank of Mauritius Ltd - Class B 1 Series Bond	18.06.2014	USD 1000	USD 1000.48	65,037
101	SBM Holdings Ltd - Class A 1 Series Bond	03.10.2014	-	-	150,000.00
102	SBM Holdings Ltd - Class B 1 Series Bond	03.10.2014	-	-	65,037.00
<b>2015</b>					
103	Green Flash Properties Ltd	30.01.2015	EUR 0.08	EUR 0.08	7,396,040
104	Delta International Property Holdings Ltd	30.03.2015	USD 1.65	USD 1.65	44,656,446
105	New Mauritius Hotels Ltd (Preference)	10.08.2015	11.00	11.00	161,423,536
106	CMB International Ltd	23.10.2015	USD 0.10	USD 0.10	115,098,380
107	Astoria Investments Ltd	10.11.2015	USD1	USD1	992,542
108	Trevo Capital Ltd (Preference)	08.12.2015	ZAR 13	ZAR 13	600,000
109	MUA Floating Rate Subordinate Notes	22.01.2015	10,000.00	9,998.92	20,000
110	ASN Credit Linked Notes 1	23.06.2015	USD 100,000	USD 99513.92	150
111	ASN Credit Linked Notes 2	23.06.2015	USD 100,000	USD 100,000	75
112	MCB Group Limited - Notes	26.06.2015	1,000.00	1,038.61	4,500,000
113	New Mauritius Hotels - Euro Fixed Rate Notes	12.11.2015	EUR 1000	EUR 976.28	2,530
114	New Mauritius Hotels Ltd - Floating Rate Tranche A	12.11.2015	1,000.00	1,000.00	96,140
115	New Mauritius Hotels Ltd - Floating Rate Tranche B	12.11.2015	1,000.00	999.89	618,703

# MARKET EVOLUTION SINCE INCEPTION

## LISTINGS ON THE OFFICIAL MARKET

		Date of Listing	Issue Price (Rs)	Closing Price (Rs) on First Trading day	Number of shares / Bonds Listed
<b>2016</b>					
116	Tadvest Limited	03.02.2016	USD 0.90	USD 0.90	15,196,030
117	Stonebridge Properties Ltd	29.03.2016	USD 1.00	USD 1.00	1,000,200
118	Mainland Real Estate Ltd	26.05.2016	GBP 2.00	GBP 2.00	591,100
119	IBL Ltd	14.07.2016	25.65	28.00	680,224,040
120	Universal Partners Ltd	08.08.2016	GBP 1.00	GBP 1.00	450,100
<b>Debentures</b>					
121	Oswa Capital Limited	11.04.2016	GBP 1.00	GBP 1.00	1,000,000
122	Compagnie de Beau Vallon Limitée - Class A	18.04.2016	1,000.00	1,025.00	235,768
123	Compagnie de Beau Vallon Limitée - Class B	18.04.2016	1,000.00	1,000.00	797,477
124	Evaco Group Ltd - Notes	01.07.2016	1,000.00	1,000.00	169,050
125	Omniscane Notes - Series 1	17.10.2016	10,000.00	9,996.78	21,000
126	Omniscane Notes - Series 2	17.10.2016	10,000.00	10,043.19	24,000
127	Omniscane Notes - Series 3	17.10.2016	10,000.00	10,505.55	91,000
128	Omniscane Notes - Series 4	17.10.2016	10,000.00	10,625.31	44,000
129	ECL Finance Limited	06.12.2016	INR 100,000	INR 100,000	50,200
130	Braw Property Holdings Plc - Fixed rate loan notes	21.12.2016	GBP 10000	GBP 10000	2,500
<b>ETFs</b>					
131	CoreShares Global Property ETF	23.05.2016	USD 2.60	USD 2.53	390,957
132	CoreShares S&P 500 ETF	23.05.2016	USD 2.09	USD 2.05	488,296
133	MCB India Sovereign Bond ETF	06.06.2016	USD 10.00	USD 10.05	875,505
<b>Warwick Phoenix PCC</b>					
134	Warwyck Prolific Fund	14.11.2016			
135	Warwyck Phoenix Income Fund	14.11.2016			
136	Warwyck Phoenix Balance Fund	14.11.2016			
137	Warwyck Phoenix Global Invest Fund 1	14.11.2016			
138	Warwyck Phoenix Global Invest Fund 2	14.11.2016			
139	Warwyck Phoenix Invest Fund 3	14.11.2016			
140	Warwyck Phoenix Global Invest Fund 5	14.11.2016			
141	Warwyck Phoenix Global Invest Fund 6	14.11.2016			

# MARKET EVOLUTION SINCE INCEPTION

## LISTINGS ON THE OFFICIAL MARKET

		Date of Listing	Issue Price (Rs)	Closing Price (Rs) on First Trading day	Number of shares / Bonds Listed
<b>2017</b>					
142	Dacosbro	13.07.2017	USD 1.00	USD 1.00	600,100
143	Afreximbank - DR	04.10.2017	USD 4.30	USD 4.40	38,575,018
144	Arindo Holdings Ltd	15.12.2017	USD 11.45	USD 11.45	26,132,044
145	Paradise Property Holdings Ltd	10.07.2017	EUR 1.00	EUR 1.00	700,000
<b>Debentures</b>					
146	Commercial Investment Property Fund Ltd-Senior Tranche-Floating Rate Notes	30.03.2017	100,000.00	101,144.91	4,000
147	Commercial Investment Property Fund Ltd-Junior Tranche-Floating Rate Notes	30.03.2017	1,000.00	1,010.93	160,000
148	Sun Limited - Notes -Tranche FRNMUR5Y	02.05.2017	1,000.00	1,040.90	814,756
149	Sun Limited - Notes -Tranche FLRNMUR5Y	02.05.2017	1,000.00	1,041.09	322,000
150	Sun Limited - Notes -Tranche FRNMUR7Y	02.05.2017	1,000.00	1,055.52	958,276
151	Sun Limited - Notes -Tranche FLRNMUR7Y	02.05.2017	1,000.00	1,055.95	336,024
152	Sun Limited - Notes -Tranche FRNEUR4Y (EUR)	02.05.2017	EUR 1000	1,033.14	37,696
153	Sun Limited - Notes -Tranche FLRNEUR4Y (EUR)	02.05.2017	EUR 1000	1,075.00	15,955
154	Sun Limited - Notes -Tranche FRNMUR 61.5 M	02.05.2017	10,000.00	10,000.00	26,868
155	Sun Limited - Notes -Tranche ZCNMUR 61.5 M	02.05.2017	7,436.23	7,436.23	20,739
156	Northfields International School Ltd - Notes	22.05.2017	1,000.00	1,000.61	200,000
157	IBL Ltd - Series 2 - Fixed Rate Notes	05.10.2017	1,000,000.00	1,017,640.98	500
158	IBL Ltd - Series 3 - Floating Rate Notes	05.10.2017	1,000,000.00	1,001,341.10	500
159	IBL Ltd - Series 4 - Fixed Rate Notes	05.10.2017	1,000,000.00	1,001,724.85	500
160	IBL Ltd - Series 5 - Floating Rate Notes	05.10.2017	1,000,000.00	1,001,784.68	500
161	New Mauritius Hotels Ltd - Notes -Tranche FLRNMUR7Y	20.11.2017	1,000.00	1,065.00	750,000
162	New Mauritius Hotels Ltd - Notes -Tranche FRNMUR7Y	20.11.2017	1,000.00	1,059.10	625,000
163	New Mauritius Hotels Ltd - Notes -Tranche FLRNMUR5Y	20.11.2017	1,000.00	1,061.00	225,000
164	New Mauritius Hotels Ltd - Notes -Tranche FRNMUR5Y	20.11.2017	1,000.00	1,056.00	600,000
165	New Mauritius Hotels Ltd - Notes -Tranche FRNEUR4Y	20.11.2017	EUR 1000	EUR 1063	20,000
<b>Structured Products</b>					
166	MCB Structured Solutions Ltd - Crescendo Global Security USD70 Notes	22.05.2017	USD 100	USD 112.00	21,956
167	MCB Structured Solutions Ltd - Crescendo Global Security MUR170 Notes	22.05.2017	1,000.00	1,150.00	188,369
168	MCB Structured Solutions Ltd - Crescendo Global Security MUR100 Notes	22.05.2017	1,000.00	1,150.00	184,955

# MARKET EVOLUTION SINCE INCEPTION

## LISTINGS ON THE OFFICIAL MARKET

		Date of Listing	Issue Price (Rs)	Closing Price (Rs) on First Trading day	Number of shares / Bonds Listed
<b>2018</b>					
169	Trans Switch Africa Holdings Ltd	6-Feb-18	USD 1.00	USD 1.28	22,000,000
170	Infrastructure Commodities Ltd	6-Jul-18	USD 1.00	USD 1.00	64,210,195
171	MeritWise Group Public Ltd	15-Oct-18	USD 1.00	USD 1.01	15,000,000
172	PSG Konsult Limited	27-Nov-18	USD 0.74	USD 0.80	1,364,885,118
173	Avanz Growth Ltd	9-Apr-18	USD 1.00	USD 1.00	4,688,055
<b>Debentures</b>					
174	MCB Group Limited - Floating Rate Senior Unsecured Notes Due 2023	23-Jan-18	1,000.00	1,004.28	2,000,000
175	BOM Golden Jubilee Bonds	26-Jun-18	25,000.00	25,000.00	358,977
176	SBM Holdings Ltd - Class A 2 Series Bond	9-Jul-18	10,000.00	9,999.64	306,052
177	SBM Holdings Ltd - Class B2 Series Bond - (USD)	9-Jul-18	USD 1000	USD 999.98	75,664
178	L'Orfebre Mauritius Ltd	25-Jul-18	USD 1000	USD 1000	2,000
179	Southern Cross Tourist Company Ltd - Notes - Tranche FLRNEUR4Y - (EUR)	3-Aug-18	EUR 1000.00	EUR 1054.8	266,000
180	Southern Cross Tourist Company Ltd - Notes - Tranche FRNMUR5Y	3-Aug-18	1,000.00	1,004.30	308,000
181	Southern Cross Tourist Company Ltd - Notes - Tranche FLRNMR7Y	3-Aug-18	1,000.00	1,005.70	276,000
182	Southern Cross Tourist Company Ltd - Tranche Notes - FLRNMR10Y	3-Aug-18	1,000.00	1,014.70	4,000
183	Southern Cross Tourist Company Ltd - Notes - Tranche FLRNEUR5Y - ( EUR)	3-Aug-18	EUR 1000.00	EUR 1057.6	7,300
<b>Structured Products</b>					
184	Absa Bank Ltd - Structured Index Linked Note	23-Jan-18	USD 1000.00	USD 1000.00	
185	CM Structured Notes - Zenith Cross Asset MUR 40 Notes	24-Jan-18	1,000.00	1,200.00	
186	CM Structured Notes - Zenith Cross Asset MUR 180 Notes	24-Jan-18	1,000.00	1,200.00	
187	Absa Bank Ltd - Structured Credit Linked Note	12-Jun-18	USD 1000.00	USD 1000.00	
188	Absa Bank Limited - ASN.D0005	10-Sep-18	USD 1000.00	USD 1000.00	
189	Absa Bank Limited - ASN.D0006	6-Dec-18	USD 1000.00	USD 1000.00	
<b>ETFs</b>					
190	African Domestic Bond Fund	18-Sep-18	USD 10.00	USD 10.00	
<b>Funds</b>					
191	Harwood Investments - Funds	19-Feb-18			
<b>2019</b>					
192	ENL Limited	23-Jan-19	40.00	43.00	374,996,326
193	Regis Holdings Limited	29-Mar-19	USD 1.00	USD 1.00	77,090,000
194	Africa Clean Energy Solutions Limited	31-May-19	USD 1.00	USD 1.00	26,099,042
195	Medine Limited	1-Aug-19			



# MARKET EVOLUTION SINCE INCEPTION

## LISTINGS ON THE OFFICIAL MARKET

		Date of Listing	Issue Price (Rs)	Closing Price (Rs) on First Trading day	Number of shares / Bonds Listed
<b>2019</b>					
<b>Debentures</b>					
196	Medine Limited Notes - Tranche FLRNMUR5Y	9-May-19	1,006.60	1,006.60	970,000
197	Medine Limited Notes - Tranche FRNMUR5Y	9-May-19	1,006.50	1,006.50	1,394,270
198	Medine Limited Notes - Tranche FLRNMUR7Y	9-May-19	1,011.70	1,011.70	805,535
199	Medine Limited Notes - Tranche FRNMUR7Y	9-May-19	1,011.50	1,011.50	830,195
200	IOST Company Ltd - 01-FRNEUR5Y	28-May-19	EUR 1070	EUR 1070	3,175
201	IOST Company Ltd - 01-FLRNEUR5Y	28-May-19	EUR 1070	EUR 1070	3,000
202	IOST Company Ltd - 01-FLRNUUSD5Y	28-May-19	USD 1070	USD 1070	1,980
203	IOST Company Ltd - 02-FRNMUR5Y	28-May-19	MUR 1048.10	MUR 1048.10	92,900
204	IOST Company Ltd - 03-FLRNEUR5Y	28-May-19	EUR 1070	EUR 1070	2,300
205	IOST Company Ltd - 03-FRNMUR5Y	28-May-19	MUR 1048.10	MUR 1048.10	230,000
206	Eastern and Southern Africa Trade & Development Board	3-Jul-19	USD 994.53	-	500,000
207	Tensai Property Services Limited	18-Oct-19	USD 1,000,000.00	-	21
208	Tensai Property Services Limited - 2nd Tranche	4-Dec-19	USD 1,013,760.67	-	29
209	Evaco Ltd (Due 2024)	5-Dec-19	1,000.00	1,020.17	650,000
<b>Structured Products</b>					
210	Absa Bank Limited - Unsubordinated and Unsecured Registered Notes due April 2024	17-May-19	USD 1000.00	USD 1000.00	914
211	CM Diversified Credit Ltd	28-Jun-19	1,000.00	1,000.54	700,000
212	CM Structured Finance Ltd	20-Aug-19	USD 1004.07	USD 1004.07	20,000
213	Absa Bank Limited - Structured Linked Note Due 2023	29-Aug-19	USD 1000.00	USD 1000.00	100
214	MCB Structured Solutions - Crescendo World Markets Leaders MUR55 Notes	30-Oct-19	1,000.00	1,000.00	147,800
215	MCB Structured Solutions - Crescendo World Markets Leaders MUR130 Notes	30-Oct-19	1,000.00	1,000.00	142,215
<b>2020</b>					
216	MCB Group Ltd - Preference Shares	2-Mar-20	10	11.25	450,000,000
217	CIM Financial Services Notes - 4.20% 2020	9-Mar-20	100,000	100,567.66	8,293
218	CIM Financial Services Notes - 4.85% 2024	9-Mar-20	100,000	101,264.19	10,700
219	Kingfisher Ltd - Notes -FRNEUR5Y- TA	30-Apr-20	EUR 1000	EUR 1035	19,925
220	Kingfisher Ltd - Notes -FRNEUR5Y- TB	30-Apr-20	EUR 1000	EUR 1033	10,075
221	Kingfisher Ltd - Notes -FRNEUR5Y- TC	30-Apr-20	EUR 1000	EUR 1034.51	10,000
222	Premium Tobacco Holdings Ltd	28-May-20	USD 10000	-	
223	CIM Financial Services Ltd - 2.50 % - 31/07/21	30-Oct-20	100,000	99,998.11	10,592
224	CIM Financial Services Ltd - 3.30 % - 31/07/23	30-Oct-20	100,000	99,964.18	7,490
225	CIM Financial Services Ltd - 4.00 % - 31/07/25	30-Oct-20	100,000	102,160.63	9,113
226	CIM Financial Services Ltd - 4.75 % - 31/07/30	30-Oct-20	100,000	103,946.63	2,805
<b>Structured Products</b>					
227	CM Structured Products (2)	17-Mar-20	EUR 1000	EUR 1000	5,000

# MARKET EVOLUTION SINCE INCEPTION

## LISTINGS ON THE OFFICIAL MARKET

		Date of Listing	Issue Price (Rs)	Closing Price (Rs) on First Trading day	Number of shares / Bonds Listed
<b>2021</b>					
228	Africure Pharmaceuticals Ltd (Listed only)	18-Jan-21	USD 1.33		
229	Ascencia Ltd	16-Aug-21	26.10	26.50	487,314,989
230	Crytel Mauritius Ltd	16-Nov-21	USD 2.80	USD 2.80	112,635,002
<b>Debentures</b>					
231	MCB Group Ltd - 7 YR Notes	30-Jun-21	1,000	1,000.79	2,000,000
232	BlueLife Limited Series 1	13-Jul-21	50,000	49,999.42	511
233	BlueLife Limited Series 2	13-Jul-21	50,000	49,999.75	5,489
234	Forty two Point two 2.70%	25-Aug-21	100,000	100,029.94	3,770
235	Forty two Point two 3.20%	25-Aug-21	100,000	100,050.99	9,142
236	Forty two Point two 3.55%	25-Aug-21	100,000	99,922.97	1,397
237	Forty two Point two 2.70% - GBP	25-Aug-21	10,000	9,939.20	1,000
238	Ascencia Ltd	16-Aug-21	11.50	11.50	15,801,033
239	NorthFields International School	24-Sep-21	1,000.00	1,005.33	250,000
240	Investcorp (Holdings) Ltd	12-Nov-21	1,000.00	1,000.19	1,123,000
<b>Listed Only</b>					
241	Meridian CRV Fixed Rate Notes	29-Oct-21	USD 10,000		
242	Brait PLC	30-Nov-21	GBP 1000,000		
<b>2022</b>					
243	Evaco Ltd	9-May-22			
244	Forty Two Point Two	7-Jul-22			
245	United Docks Ltd	29-Aug-22			
<b>2023</b>					
246	Beachcomber Hospitality Class A Pref	12-May-23	1,000.00	1,000.00	364,251
247	Beachcomber Hospitality Class B Pref	12-May-23	EUR 1,000	EUR 1,000	32,922
<b>Debentures</b>					
248	IBL Bonds Mur 4y	9-Mar-23	1,000.00	1,000.00	1,014,390
249	IBL Bonds MUR 7y	9-Mar-23	1,000.00	1,000.00	1,985,610
250	CIM 5.35% Notes due 2026	22-May-23	100,000.00	100,000.00	10,435
251	CIM 5.80% Notes due 2028	22-May-23	100,000.00	100,289.34	15,449
252	Innodis Bonds	15-Jun-23	100,000.00	100,335.51	2,000
253	CIM Green Bonds	25-Oct-23	100,000.00	100,000.00	11,000
254	MCB Group Notes Due 2026	28-Nov-23	1,000.00	999.68	773,195
255	MCB Group Notes Due 2028	28-Nov-23	1,000.00	999.57	1,762,805
256	ENL Bonds due 2028	18-Dec-23	1,000.00	1,000.00	356,209
257	ENL Bonds due 2030	18-Dec-23	1,000.00	1,000.00	1,050,427
258	ENL Bonds due 2038	18-Dec-23	1,000.00	1,000.00	1,093,364
<b>Structured Products</b>					
259	MCB Structured Solutions - Index Credit Linked Notes - SG Global Security / MCB	24-Jun-23	1,000.00	1,000.00	160,000
260	MCB Structured Solutions Ltd - 'COVIFRA' Credit-Linked Notes	7-Sep-23	EUR 1,000	EUR 1,000	3,380
261	CM Structured Products (1) Ltd - 'ENL' Credit-Linked Notes	27-Oct-23	1,000.00	1,000.00	1,300,000

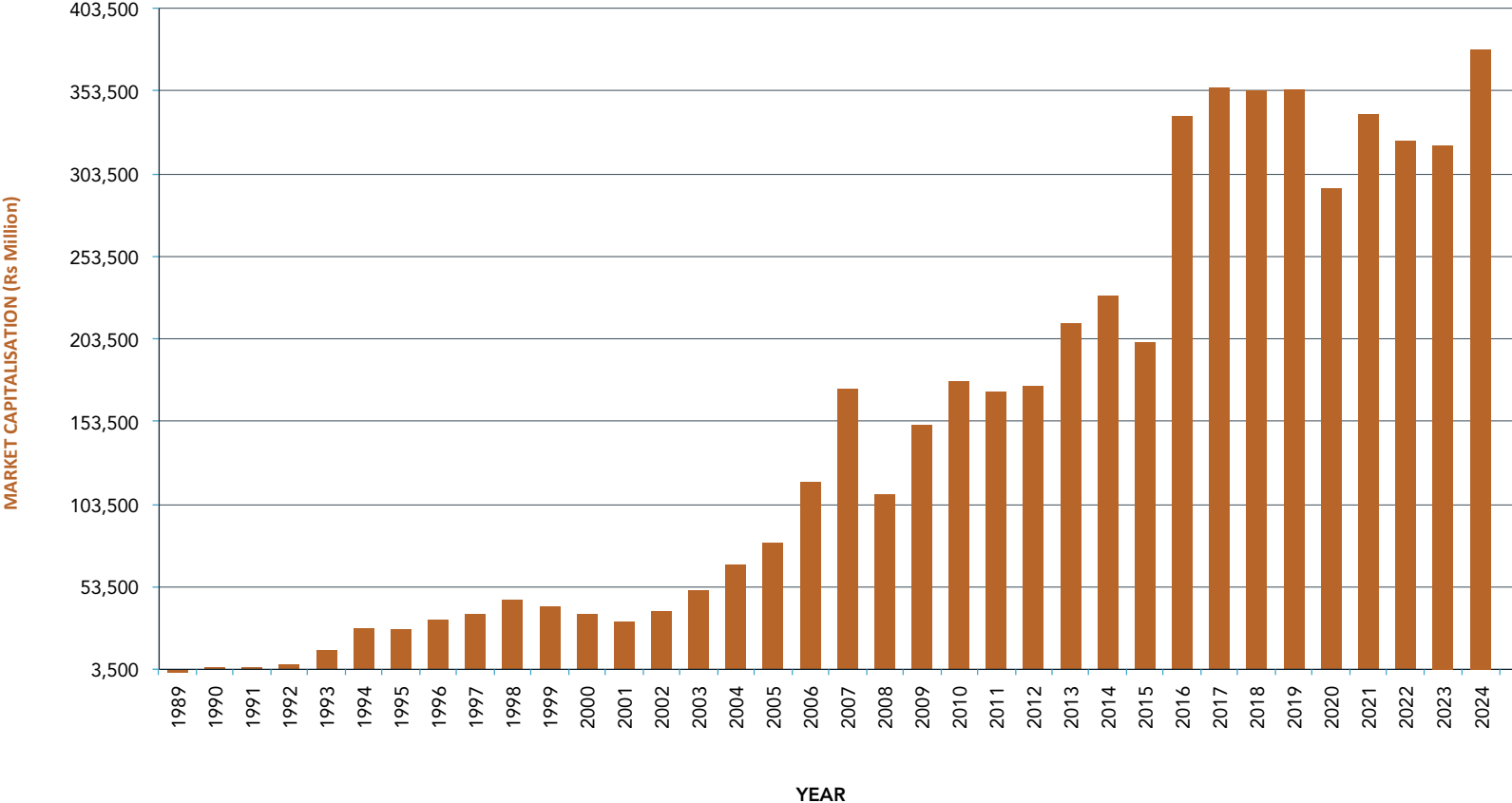
# MARKET EVOLUTION SINCE INCEPTION

## LISTINGS ON THE OFFICIAL MARKET

		Date of Listing	Issue Price (Rs)	Closing Price (Rs) on First Trading day	Number of shares / Bonds Listed
<b>2024</b>					
262	Emtel Limited	05-Jul-24	23.00	23.45	455,400,000.00
263	Riveo Limited	25-Nov-24	24.65	19.50	174,364,026.00
264	Africa Eats Ltd (USD)	03-Dec-24	2.25	2.25	10,812,092.00
265	Elite Meat Processors Limited (USD)	03-Dec-24	1.85	1.85	4,819,891.00
266	Ziweto Holdings Limited (USD)	03-Dec-24	1.60	1.60	3,505,021.00
<b>Debentures</b>					
267	CIM Financial Services Ltd	25-Nov-24	100,000.00	100,000.00	10,000.00
268	CIM Financial Services Ltd	25-Nov-24	100,000.00	100,000.00	10,000.00
269	IBL Ltd	19-Nov-24	1,000.00	1,000.00	15,000,000.00
270	IBL Ltd	19-Nov-24	1,000.00	1,000.00	15,000,000.00
271	ABC Banking Corporation Ltd	03-Apr-24	10,000.00	10,001.63	70,000.00
272	Forty Two Point Two	29-May-24	100,000.00	100,000.00	1,110.00
273	Forty Two Point Two	29-May-24	GBP 10,000.00	GBP 10,000.00	154.00

# MARKET EVOLUTION SINCE INCEPTION

EVOLUTION OF MARKET CAPITALISATION (1989-2024)



# MARKET EVOLUTION SINCE INCEPTION

## EVOLUTION OF INDICES (1989 – 2024), END PERIOD.

YEAR	5-Jul-89	1989	1990	1991	1992	1993	1994	1995	1996	1997	1998	1999	2000	2001	2002	2003	2004	2005	2006	
<b>SEM-ASI</b>																				
<b>SEMTRI-ASI</b>																				
<b>SEMDEX</b>	100.00	117.34	171.23	154.17	183.18	302.63	476.10	344.44	353.46	391.12	465.60	435.69	390.10	340.92	399.26	549.58	710.77	804.03	1204.46	
<b>SEMTRI (Rs Terms)</b>	100.00	118.95	183.80	173.11	217.41	375.45	608.24	454.97	485.32	557.28	691.29	680.04	650.71	626.75	812.56	1194.85	1619.92	1951.83	3060.71	
<b>SEMTRI (Dollar Terms)</b>	100.00	121.97	201.34	177.19	204.53	316.13	520.87	387.71	380.81	391.14	435.73	417.17	365.14	323.58	433.96	703.96	894.49	996.55	1437.32	
<b>SEM - 10</b>	-	-	-	-	-	-	-	-	-	-	111.70	105.16	94.68	74.65	88.45	119.39	149.67	175.43	264.41	
<b>SEMSI</b>	-	-	-	-	-	-	-	-	-	-	-	-	-	-	-	-	-	-	-	
<b>SEMBI</b>																				
<b>SEM-AFRIDEX</b>																				

YEAR	2007	2008	2009	2010	2011	2012	2013	2014	2015	2016	2017	2018	2019	2020	2021	2022	2023	2024
<b>SEM-ASI</b>										1,852.57	2,221.82	2,026.43	2,004.97	1,643.74	1,935.51	1,891.03	1,872.84	2,149.11
<b>SEMTRI-ASI</b>										6,387.96	7,913.75	7,478.64	7,735.67	6,455.89	7,853.69	7,921.81	8,193.78	9,876.85
<b>SEMDEX</b>	1852.21	1182.74	1660.87	1967.45	1888.38	1732.06	2095.69	2073.72	1,811.07	1,808.37	2,202.14	2,218.52	2,177.09	1,648.39	2,097.89	2,055.25	2,038.10	2,403.13
<b>SEMTRI (Rs Terms)</b>	4868.61	3233.74	4712.70	5747.85	5673.68	5364.29	6673.93	6795.35	6,109.19	6,309.09	7,906.46	8,197.69	8,309.75	6,363.84	8,345.17	8,427.63	8,739.93	10,839.55
<b>SEMTRI (Dollar Terms)</b>	2621.77	1563.51	2395.98	2906.28	3000.01	2729.02	3436.43	3327.81	2,631.14	2,744.60	3,689.32	3,749.53	3,580.45	2,541.59	3,027.67	3,020.78	3,118.14	3,622.32
<b>SEM - 10</b>	477.40	267.22	360.75	373.22	350.33	337.28	403.64	385.51	346.35	345.04	421.82	425.72	429.86	309.70	388.00	373.02	366.97	448.63
<b>SEMSI</b>	-	-	-	-	-	-	-	-	97.29	100.44	120.43	122.22	124.30	90.83	114.20	110.62	108.26	128.87
<b>SEMBI</b>											99.68	98.08	99.04	101.06	103.09	100.54	103.18	104.39
<b>SEM-AFRIDEX</b>												98.78	103.39	100.23	103.45	100.22	99.47	99.65

**Notes:**

Daily Market Indices can be downloaded on following link: <http://www.stockexchangeofmauritius.com/historicaldata>

SEM-10 replaced the SEM-7 index as from 2nd October 2014

The SEM launched the SEM Sustainability index, SEMSI on 7th September 2015

The SEM launched the SEM-ASI and the SEMTRI-ASI on 12th September 2016 and 10th October 2016 respectively.

The SEMBI was launched on the 14th November 2017.

The SEM launched the SEM-AFRIDEX on the 1st November 2018

# MARKET AT A GLANCE

## OFFICIAL MARKET: MARKET AT A GLANCE 2024

Date	SEM-ASI	SEMTRI-ASI	SEMDEX	SEMTRI (Rs)	SEMTRI (USD)	SEM-10	SEMSI	SEMBI	SEM-AFRIDEX	Market Capitalisation (Rs) - SEM-ASI	Market Capitalisation (Rs) - SEMDEX	Turnover (Rs)	Volume	TRADING SESSIONS
JANUARY	1,886.36	8,262.10	2,051.23	8,808.38	3,077.81	370.77	108.47	103.31	100.56	322,947,696,995	259,452,684,080	561,054,169	18,870,005	18
FEBRUARY	1,904.12	8,347.53	2,065.79	8,881.11	3,052.01	375.62	109.83	103.67	102.23	325,956,476,349	261,294,804,043	837,488,307	30,730,627	19
MARCH	1,975.98	8,666.51	2,151.68	9,255.55	3,130.25	397.04	115.97	103.90	103.81	338,282,443,412	272,185,113,462	1,053,734,945	32,934,848	19
APRIL	1,968.09	8,651.68	2,149.12	9,259.12	3,136.66	398.73	115.79	103.79	103.05	336,931,178,443	271,862,315,322	675,284,962	27,673,879	19
MAY	1,957.47	8,692.93	2,146.65	9,334.79	3,176.53	401.78	114.83	103.83	100.06	334,978,182,583	271,549,305,925	798,437,605	36,022,977	22
JUNE	1,935.59	8,685.75	2,108.82	9,288.89	3,098.53	395.04	112.59	104.11	101.97	331,159,135,874	266,763,882,422	605,105,861	30,109,608	20
JULY	1,935.29	8,712.69	2,113.49	9,346.71	3,149.77	396.18	112.94	104.11	100.71	342,664,179,858	278,952,239,981	3,366,782,580	147,430,478	23
AUGUST	2,022.53	9,135.91	2,233.67	9,886.23	3,342.26	422.44	121.72	104.28	99.57	357,947,574,271	294,814,471,489	764,682,399	36,538,783	21
SEPTEMBER	2,099.86	9,486.14	2,342.17	10,367.60	3,551.58	439.69	127.71	104.13	98.51	371,634,876,455	309,134,592,924	831,961,433	33,919,563	21
OCTOBER	2,180.74	9,855.35	2,458.60	10,888.10	3,711.13	458.38	132.27	104.08	97.67	386,003,156,636	324,556,941,033	1,741,978,370	49,409,222	22
NOVEMBER	2,128.19	9,758.71	2,381.41	10,712.51	3,626.28	443.30	127.66	104.20	98.73	375,366,768,686	313,061,972,808	1,571,049,456	32,127,599	21
DECEMBER	2,149.11	9,876.85	2,403.13	10,839.55	3,622.32	448.63	128.87	104.39	99.65	382,499,532,116	317,597,792,617	950,326,578	19,915,913	21
<b>TOTAL</b>												<b>13,757,886,663</b>	<b>495,683,502</b>	<b>246</b>

Note \*: end month figures

SEM-10 replaced the SEM-7 index as from 2nd October 2014

The SEM launched the SEM Sustainability index, SEMSI on 7th September 2015

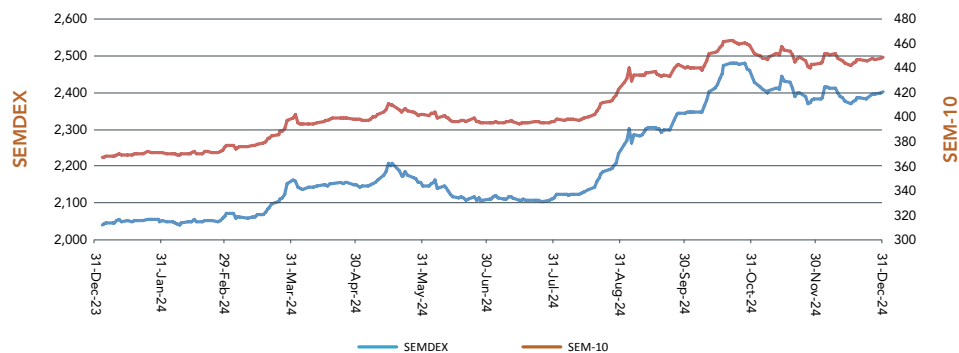
The SEM launched the SEM-ASI and the SEMTRI-ASI on 12th September 2016 and 10th October 2016 respectively.

The SEM launched the SEMBI on the 14th November 2017

The SEM launched the SEM-AFRIDEX on the 1st November 2018

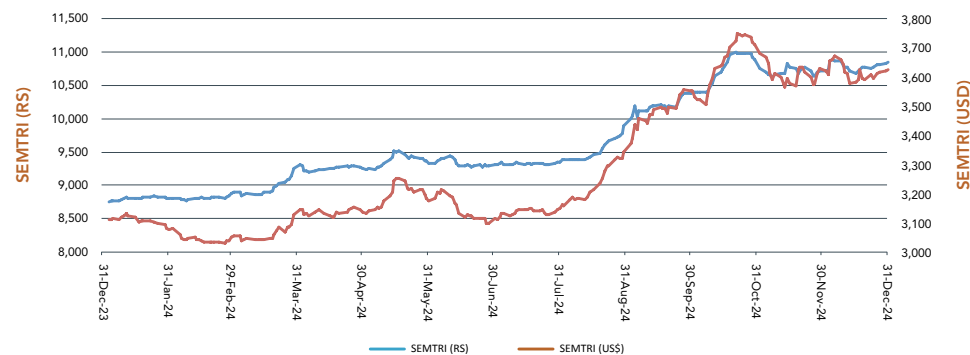
### SEMDEX/SEM-10 YEAR 2024

Evolution of SEMDEX & SEM-10 - Year 2024



### SEMTRI (IN RS AND US \$) 2024

Evolution of SEMTRI (Rs) & SEMTRI (USD) - Year 2024



# MARKET AT A GLANCE

## SUMMARY FINANCIAL DATA FOR LISTED STOCKS 2024

SECURITIES EQUITY BOARD	Nominal Value (Rs)	Price (Rs) at 29.12.23	Price (Rs) at 31.12.24	% Change in Price	P.E.R at 29.12.23	P.E.R at 31.12.24	Dividend Yield (%) at 29.12.23	Dividend Yield (%) at 31.12.24	E.P.S (Rs) at 29.12.23	E.P.S (Rs) at 31.12.24	D.P.S (Rs) at 29.12.23	D.P.S (Rs) at 31.12.24	Net Asset Value (NAV) at 29.12.23	Net Asset Value (NAV) at 31.12.24	Financial Year Ended
<b>BANKS, INSURANCE &amp; OTHER FINANCE</b>															
CIM Financial Services Ltd	-	10.85	14.20	30.88	7.70	8.77	5.16	5.14	1.41	1.62	0.56	0.73	8.55	9.30	Sep-24
MCB Group Limited	-	324.00	446.00	37.65	5.62	7.00	6.25	5.16	57.67	63.69	20.25	23.00	364.20	404.17	Jun-24
MCB Group Limited - ( Preference Shares )	-	10.30	10.95	6.31	-	-	2.28	4.29	-	-	0.24	0.47	-	-	Jun-24
MUA Ltd	-	99.00	60.00	(39.39)	16.36	9.92	2.93	4.83	6.05	6.05	2.90	2.90	81.26	81.26	Dec-22
SBM Holdings Ltd	-	4.55	5.18	13.85	3.23	3.10	4.40	7.72	1.41	1.67	0.20	0.40	8.95	10.43	Dec-23
Swan General Ltd	5.00	445.00	401.00	(9.89)	4.82	4.34	3.93	4.36	92.33	92.33	17.50	17.50	587.78	587.78	Dec-22
<b>COMMERCE</b>															
Harel Mallac Ltd	10.00	27.00	27.00	-	2.52	1.97	-	-	10.71	13.68	-	-	151.31	117.83	Dec-23
Innodis Ltd	10.00	33.50	28.75	(14.18)	10.95	16.24	5.52	6.43	3.06	1.77	1.85	1.85	49.22	50.07	Jun-24
IBL Ltd	-	43.10	39.00	(9.51)	9.58	8.16	1.53	1.87	4.50	4.78	0.66	0.73	28.15	34.07	Jun-24
Vivo Energy Mauritius Ltd	10.00	330.75	354.00	7.03	18.46	21.96	5.42	4.55	17.92	16.12	17.92	16.12	41.34	40.17	Dec-23
<b>INFORMATION COMMUNICATION &amp; TECHNOLOGY</b>															
Emtel Limited	-	-	21.80	-	-	31.59	-	5.73	-	0.69	-	1.25	-	0.25	Dec-23
<b>INDUSTRY</b>															
Gamma - Civic Ltd	1.00	34.50	33.00	(4.35)	11.13	11.62	6.52	6.06	3.10	2.84	2.25	2.00	29.06	29.99	Dec-23
Go Life International Ltd (USD)	0.10 (USD)	0.01	0.01	-	-	-	-	-	-	-	-	-	-	-	Feb-24
Phoenix Beverages Ltd	10.00	502.00	542.00	7.97	11.28	8.17	3.19	4.13	44.50	66.33	16.00	22.40	369.07	413.93	Jun-24
Mauritius Chemical & Fertilizer Industry Ltd	10.00	9.28	8.00	(13.79)	3.05	7.41	-	11.25	3.04	1.08	-	0.90	21.57	19.81	Dec-23
Mauritius Oil Refineries Ltd	5.00	17.50	18.25	4.29	7.17	7.54	2.86	7.12	2.44	2.42	0.50	1.30	12.68	15.55	Jun-24
PIM Limited	10.00	36.50	43.95	20.41	5.08	2.31	9.59	9.10	7.18	18.99	3.50	4.00	41.05	56.04	Jun-24
United Basalt Products Ltd	-	100.00	85.00	(15.00)	19.84	11.42	-	2.06	5.04	7.44	-	1.75	159.01	162.13	Jun-24
<b>INVESTMENTS</b>															
Alteo Limited	-	9.96	13.05	31.02	3.40	3.98	2.41	4.83	2.93	3.28	0.24	0.63	54.72	58.49	Jun-24
BMH Ltd	-	23.00	30.00	30.43	16.67	7.39	2.61	2.67	1.38	4.06	0.60	0.80	76.13	77.14	Dec-23
Caudan Development Ltd	1.00	0.49	0.58	18.37	8.17	58.00	-	-	0.06	0.01	-	-	2.22	2.24	Jun-24
CIEL Limited	-	6.88	9.36	36.05	4.38	5.64	4.07	3.42	1.57	1.66	0.28	0.32	12.38	13.73	Jun-24
ENL Limited (Ordinary A Shares)	-	19.65	23.35	18.83	4.32	4.17	5.09	4.71	4.55	5.60	1.00	1.10	85.39	92.30	Jun-24
Fincorp Investment Ltd	1.00	16.30	17.95	10.12	4.68	6.21	3.99	3.90	3.48	2.89	0.65	0.70	72.77	78.07	Jun-24
The Mauritius Development Investment Trust Ltd	-	1.97	1.80	(8.63)	-	4.39	3.55	4.44	-	0.41	0.07	0.08	3.22	3.70	Jun-24
Medine Limited	10.00	52.25	75.50	44.50	4.60	6.53	4.78	6.95	11.35	11.56	2.50	5.25	208.72	222.31	Jun-24
National Investment Trust Ltd	10.00	17.25	10.50	(39.13)	50.74	5.56	-	-	0.34	1.89	-	-	37.77	37.77	Jun-24
Promotion and Development Ltd	5.00	101.00	101.25	0.25	6.02	7.09	4.46	4.59	16.78	14.28	4.50	4.65	357.95	385.85	Jun-24
P. O. L. I. C. Y Ltd	1.00	3.00	4.48	49.33	75.00	74.67	6.67	5.58	0.04	0.06	0.20	0.25	5.32	6.19	Dec-23
Rogers & Company Limited	-	31.50	40.20	27.62	4.95	3.97	3.94	3.38	6.36	10.12	1.24	1.36	52.33	63.37	Jun-24
Terra Mauricia Ltd	-	22.50	20.80	(7.56)	5.97	3.43	4.44	5.53	3.77	6.06	1.00	1.15	70.61	75.59	Dec-23
United Docks Ltd	10.00	56.00	77.50	38.39	4.32	1.76	1.79	3.87	12.96	44.01	1.00	3.00	187.09	190.37	Jun-24
<b>LEISURE &amp; HOTELS</b>															
Automatic Systems Ltd	7.00	70.25	79.75	13.52	8.81	-	8.54	1.88	7.97	-	6.00	1.50	32.84	14.34	Dec-23
Lottotech Ltd	-	7.20	5.14	(28.61)	16.00	11.17	6.25	8.37	0.45	0.46	0.45	0.43	0.56	0.51	Dec-23
New Mauritius Hotels Limited	-	11.10	14.00	26.13	2.88	3.95	-	3.57	3.86	3.54	-	0.50	16.38	20.21	Jun-24
New Mauritius Hotels Limited (Preference Shares)	-	11.00	10.90	(0.91)	-	-	15.00	6.06	-	-	1.65	0.66	-	-	Jun-24
Lux Island Resorts Ltd	10.00	57.75	56.00	(3.03)	5.43	6.77	3.46	4.46	10.63	8.27	2.00	2.50	58.81	63.95	Jun-24
Riveo Limited	-	-	18.45	-	-	-	-	-	-	-	-	-	-	-	-

# MARKET AT A GLANCE

## SUMMARY FINANCIAL DATA FOR LISTED STOCKS

SECURITIES EQUITY BOARD	Nominal Value (Rs)	Price (Rs) at 29.12.23	Price (Rs) at 31.12.24	% Change in Price	P.E.R at 29.12.23	P.E.R at 31.12.24	Dividend Yield (%) at 29.12.23	Dividend Yield(%) at 31.12.24	E.P.S (Rs) at 29.12.23	E.P.S (Rs) at 31.12.24	D.P.S (Rs) at 29.12.23	D.P.S (Rs) at 31.12.24	Net Asset Value (NAV) at 29.12.23	Net Asset Value (NAV) at 31.12.24	Financial Year Ended
<b>LEISURE &amp; HOTELS</b>															
Sun Limited	-	38.00	40.35	6.18	4.51	3.53	5.26	6.20	8.42	11.44	2.00	2.50	60.50	67.44	Jun-24
<b>PROPERTY DEVELOPMENT</b>															
Ascencia Limited (Ordinary Shares)	-	18.90	19.50	3.17	8.67	7.99	5.03	5.28	2.18	2.44	0.95	1.03	20.34	21.75	Jun-24
Beachcomber Hospitality Investments Ltd - Class A Preference Shares (MUR)	-	1,005.00	960.00	(4.48)	-	-	-	4.67	-	-	-	44.80	-	-	Jun-24
Beachcomber Hospitality Investments Ltd - Class B Preference Shares (EUR)	( Eur)	1,000.00	1,000.00	-	-	-	-	4.48	-	-	-	44.80	-	-	Jun-24
BlueLife Limited	-	0.55	0.55	-	11.70	4.23	-	3.64	0.05	0.13	-	0.02	1.93	2.18	Jun-24
<b>SUGAR</b>															
Omicane Ltd	-	23.40	21.30	(8.97)	4.20	3.34	-	4.69	5.57	6.38	-	1.00	95.39	84.09	Dec-23
<b>FOREIGN</b>															
Agape Global Investments Limited	-	1.85	1.35	(27.03)	-	-	-	-	-	-	-	-	0.05	0.03	Feb-24
Grit Real Estate Income Group Limited (USD)	-	0.30	0.17	(43.33)	-	-	6.67	-	-	-	0.02	-	0.73	0.43	Jun-24
PSG Financial Services Limited (USD)	-	0.80	0.80	-	16.70	18.78	1.75	1.87	0.05	0.04	0.01	0.01	0.21	0.19	Feb-24
<b>FUNDS / GBL COMPANIES</b>															
Africa Clean Energy Solutions Limited (USD)	-	0.78	0.78	-	-	-	-	-	-	-	-	-	-	-	Jun-23
Africure Pharmaceuticals Ltd (USD)	-	6.06	6.06	-	22.44	-	-	-	0.27	-	-	-	2.42	2.15	Mar-24
Arindo Holdings (Mauritius) Ltd	-	11.45	11.45	-	45.80	4.94	-	-	0.25	2.32	-	-	15.70	26.31	Dec-23
Astoria Investment Ltd (USD)	-	0.32	0.32	-	1.62	-	-	-	0.20	-	-	-	0.82	0.79	Dec-23
Bayport Mangement Ltd	-	4.47	4.47	-	111.75	27.94	-	-	0.04	0.16	-	-	5.29	4.36	Dec-23
Crytel Mauritius Ltd (USD)	-	5.90	5.90	-	29.50	19.60	-	-	0.20	0.30	-	-	2.09	2.57	Dec-23
Africa Eats Ltd (USD)	-	-	2.25	-	-	-	-	-	-	-	-	-	-	-	-
Elite Meat Processors Limited (USD)	-	-	1.85	-	-	-	-	-	-	-	-	-	-	-	-
Tadvest Limited (USD)	-	0.91	0.91	-	22.75	6.50	-	-	0.04	0.14	-	-	1.53	1.66	Dec-23
Trans Switch Africa Holdings Ltd (USD)	-	1.28	1.28	-	-	-	-	-	-	-	-	-	0.63	0.63	Jun-23
Universal Partners Ltd (GBP)	-	0.90	0.90	-	-	-	-	-	-	-	-	-	1.30	1.29	Jun-24
Ziweto Holdings Limited (USD)	-	-	1.66	-	-	-	-	-	-	-	-	-	-	-	-
<b>EXCHANGE TRADED FUND (ETF)</b>															
African Domestic Bond Fund (Fixed Income) - (USD)	-	6.80	6.19	(8.97)	-	-	-	-	-	-	-	-	-	-	-
MCB India Sovereign Bond (Fixed Income) - (USD)	-	7.61	7.41	(2.63)	-	-	-	-	-	-	-	-	-	-	-
NewGold (Commodity) - (MUR)	-	855.00	1,178.20	37.80	-	-	-	-	-	-	-	-	-	-	-
<b>DUAL CURRENCY TRADING</b>															
Grit Real Estate Income Group Limited - (MUR)	-	13.75	8.80	(36.00)	-	-	-	-	-	-	-	-	-	-	-
<b>DEPOSITORY RECEIPTS</b>															
Afreximbank (USD)	-	2.85	2.70	(5.26)	4.72	3.18	8.77	10.63	0.60	0.85	0.25	0.29	5.85	6.37	Dec-23

Emtel Limited - Listed on 5 July 2024

Riveo Limited - Listed on 25 November 2024

Africa Eats Ltd (USD) - Listed on 3 December 2024

Elite Meat Processors Limited (USD) - Listed on 3 December 2024

Ziweto Holdings Limited (USD) - Listed on 3 December 2024



# COMPANIES' PERFORMANCE IN 2024

## TOP 10 COMPANIES YEAR 2024 : MARKET CAPITALISATION (Rs) YEAR END

Rank	Securities	Rs (billion)	% of Total Market Capitalisation
1	MCB Group Limited	115.7	30.2%
2	PSG Financial Services Ltd	47.6	12.5%
3	IBL Ltd	26.5	6.9%
4	CIEL Limited	15.9	4.1%
5	SBM Holdings Ltd	15.7	4.1%
6	Vivo Energy Mauritius Limited	10.4	2.7%
7	Rogers & Co. Ltd	10.1	2.6%
8	Emtel Limited	9.9	2.6%
9	CIM Financial Services Ltd	9.7	2.5%
10	Ascencia Ltd	9.5	2.5%

## TOP 10 SECURITIES YEAR 2024: TURNOVER (Rs)

Rank	Securities	Rs (million)	% of Total Market Turnover
1	MCB Group Limited	4,101.9	29.8%
2	Emtel Limited	2,675.1	19.4%
3	CM Diversified Credit Ltd	650.3	4.7%
4	Sanlam	529.3	3.8%
5	SBM Holdings Ltd	521.9	3.8%
6	ENL Limited (Notes)	500.0	3.6%
7	ENL Limited	412.4	3.0%
8	New Mauritius Hotels Limited	341.1	2.5%
9	IBL Ltd	283.1	2.1%
10	CIEL Limited	267.9	1.9%

## TOP 10 SECURITIES YEAR 2024: VOLUME TRADED

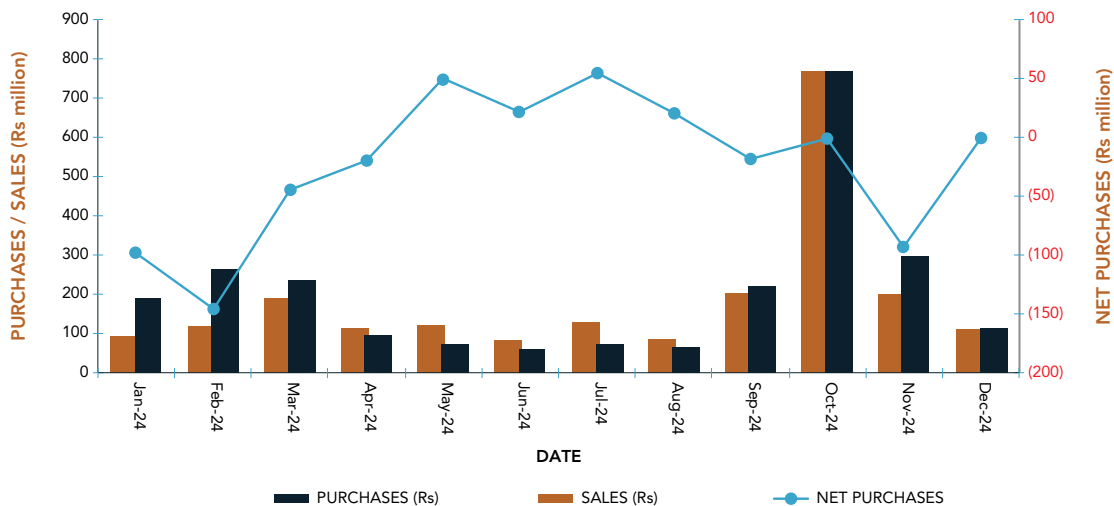
Rank	Securities	No of Shares (million)	% of Volume Traded
1	EMTEL Limited	116.5	23.5%
2	SBM Holdings Ltd	105.3	21.2%
3	CIEL Limited	33.5	6.8%
4	New Mauritius Hotels Limited	29.7	6.0%
5	The Mauritius Development Investment Trust Ltd	29.4	5.9%
6	P.O.L.I.C.Y Ltd	22.8	4.6%
7	Caudan Development Ltd	21.9	4.4%
8	ENL Limited	20.2	4.1%
9	BlueLife Limited	12.8	2.6%
10	Alteo Limited	11.8	2.4%

# FOREIGN INVESTMENT

## FOREIGN INVESTMENTS IN 2024

MONTH	PURCHASES (Rs M)	SALES (Rs M)	NET PURCHASES (Rs M)
Jan-2024	93,635,156	190,824,287	-97,189,131
Feb-2024	120,006,565	264,956,447	-144,949,882
Mar-2024	191,402,593	235,291,163	-43,888,571
Apr-2024	114,928,229	95,800,665	19,127,564
May-2024	122,182,907	72,721,672	49,461,234
Jun-2024	82,808,447	60,770,282	22,038,164
Jul-2024	129,920,118	74,073,014	55,847,105
Aug-2024	85,207,465	64,306,525	20,900,940
Sep-2024	202,204,550	219,980,791	-17,776,242
Oct-2024	769,440,113	769,748,135	-308,022
Nov-2024	201,639,904	293,989,683	-92,349,779
Dec-2024	112,358,413	112,441,683	-83,270
<b>TOTAL</b>	<b>2,225,734,459</b>	<b>2,454,904,348</b>	<b>-229,169,889</b>

### FOREIGN INVESTMENTS IN 2024



### ACTIVITY ANALYSIS (FOREIGN V/S DOMESTIC)

#### VOLUME

ACTIVITY ANALYSIS	2020	2021	2022	2023	2024
Domestic Activity	83.30%	92.34%	91.58%	83.88%	91.78%
Foreign Activity	16.70%	7.66%	8.42%	16.12%	8.22%
<b>Total</b>	<b>100%</b>	<b>100%</b>	<b>100%</b>	<b>100%</b>	<b>100%</b>

#### TURNOVER

ACTIVITY ANALYSIS	2020	2021	2022	2023	2024
Domestic Activity	66.80%	77.40%	78.49%	70.98%	82.99%
Foreign Activity	33.20%	22.60%	21.51%	29.02%	17.01%
<b>Total</b>	<b>100%</b>	<b>100%</b>	<b>100%</b>	<b>100%</b>	<b>100%</b>

## PART 2

# DEVELOPMENT & ENTERPRISE MARKET (DEM)

# MARKET EVOLUTION SINCE INCEPTION

## TIME SERIES EVOLUTION

### Stock Market Highlights

	2006	2007	2008	2009	2010	2011	2012	2013	2014	2015	2016	2017	2018	2019	2020	2021	2022	2023	2024
No. of listed Cos (End of Period)	43	50	49	49	50	49	47	48	44	44	42	40	43	37	38	38	40	40	38
No. of listed Securities (End of Period)	50	56	56	55	56	56	53	55	49	51	49	47	50	43	43	43	44	43	41
Market Capitalisation (Rs) (End of Period)	44,219,181,590	49,827,250,478	38,717,741,685	48,552,776,837	55,749,903,160	58,744,963,565	44,177,941,115	55,788,735,060	47,951,052,822	49,439,377,960	46,849,922,936	52,651,156,098	63,664,854,755	49,465,119,162	45,067,653,782	52,747,785,877	52,567,879,533.53	52,285,000,681.16	46,097,727,329.82
DEMEX (End of Period)	138.53	147.61	112.88	136.68	148.64	153.22	147.55	173.74	202.89	199.34	203.36	229.71	235.44	234.80	213.83	305.67	266.61	267.46	236.06
DEMTRI (in Rs terms, End of Period)	140.26	153.33	120.56	150.17	166.93	174.83	173.32	210.05	251.21	251.66	265.70	309.80	328.08	339.60	314.94	459.44	412.53	427.28	391.39
DEMTRI (in US US\$ terms, End of Period)	132.50	166.11	117.26	153.59	169.80	185.97	177.38	217.58	247.42	218.05	232.53	290.82	301.88	294.37	249.96	335.34	297.47	306.68	263.13
Annual Turnover (Rs)	685,402,290	964,724,292	1,343,752,006	2,379,665,588	2,019,504,252	1,801,086,198	1,440,947,115	3,746,526,455	2,262,160,206	1,946,814,647	1,783,771,981	3,196,996,325	3,093,023,308	1,999,919,354	934,522,620	1,839,779,250	833,271,542.83	2,315,707,267.40	696,627,351.25
Average Turnover per session (Rs)	11,054,876	4,176,296	5,418,355	9,518,662	8,013,906	7,233,278	5,833,794	15,106,962	9,158,543	7,787,259	7,078,460	12,839,343	12,676,325	8,196,391	3,830,011	7,418,465	3,333,086.17	9,300,029.19	2,831,818.50
Annual Traded Volume	29,418,186	43,204,053	88,298,462	473,893,298	144,153,032	103,491,939	76,809,839	408,178,438	190,741,518	151,357,764	95,552,757	149,098,435	94,216,764	256,030,009	90,200,171	325,853,351	71,915,583	110,344,583	81,168,204
P/E Ratio (End of Period)	11.09	10.43	9.54	14.63	13.23	12.44	10.32	11.81	13.28	10.64	10.06	12	12.91	12.17	13.27	19.5	11.79	10.53	7.96
Dividend Yield - % (End of Period)	2.18	2.66	3.44	2.66	2.7	2.49	3.25	2.83	2.82	2.73	3.44	3.82	4.07	3.77	3.25	2.14	3.24	3.78	4.34
No. of Trading Sessions*	62	231	248	250	252	249	247	248	247	250	252	249	244	244	244	248	250	249	246
Weekly Frequency	3	5	5	5	5	5	5	5	5	5	5	5	5	5	5	5	5	5	5
US\$ Rate in Rs, (End of Period)	33.04	28.68	32.69	31.4	31.34	29.98	30.90	30.53	32.10	36.50	36.75	33.69	34.37	36.48	39.36	43.33	43.857	44.062	47.041
Annual Turnover (US\$)	20,744,621	33,637,528	41,105,904	75,785,528	64,438,553	60,076,257	46,632,593	122,716,228	70,472,281	53,337,388	48,538,013	94,894,518	89,991,950	54,816,340	23,742,350	42,460,690	18,999,739	52,555,655	14,808,940
Average Turnover per session (US\$)	334,591	145,617	165,750	303,142	255,709	241,270	188,796	494,824	285,313	213,350	192,611	381,102	368,819	224,657	97,305	171,212	75,999	211,067	60,199
Market Cap in US\$ (End of Period)	1,338,352,954	1,737,351,830	1,184,390,997	1,546,266,778	1,778,873,745	1,959,471,767	1,429,706,832	1,827,341,469	1,493,802,269	1,354,503,506	1,274,827,835	1,562,812,588	1,852,337,933	1,355,803,069	1,144,982,439	1,217,378,335	1,198,620,050	1,186,623,410	979,947,861
Capital Raised (Rs)	-	1,386,903,536	686,507,222	685,300,310	1,176,872,311	1,241,868,130	500,000,625	-	2,040,097,199	2,055,173,497	1,000,104,688	565,390,410	1,622,014,863	112,500,000	-	-	782,780,356.00	-	200,000,000

Note:

\*Trading session on the DEM were held thrice weekly until 14th March 2007 when daily trading started.

## SELECTED MARKET INDICATORS

YEAR	GDP	MARKET CAPITALISATION	MKT CAP/GDP	TURNOVER	TURNOVER/MKT CAP	TURNOVER/GDP
	AT CURRENT MARKET PRICES (RS MILLION)	(End of period) (RS MILLION)	(%)	(RS MILLION)	(%)	(%)
2006	213,444	44,219.18	20.72	685.4	1.55	0.32
2007	243,998	49,827.25	20.42	964.7	1.94	0.40
2008	274,316	38,717.74	14.11	1,344	3.47	0.49
2009	282,354	48,552.78	17.20	2,380	4.90	0.84
2010	299,170	55,749.90	18.63	2,020	3.62	0.68
2011	323,011	58,744.96	18.19	1,801	3.07	0.56
2012	343,835	44,177.94	12.85	1,441	3.26	0.42
2013	366,479	55,788.74	15.22	3,747	6.72	1.02
2014	387,281	47,951.05	12.38	2,262	4.72	0.58
2015	406,636	49,439.38	12.16	1,947	3.94	0.48
2016	434,615	46,849.92	10.78	1,784	3.81	0.41
2017	460,881	52,651.16	11.42	3,197	6.07	0.69
2018	481,256	63,664.85	13.23	3,093	4.86	0.64
2019	498,254	49,465.12	9.93	2,000	4.04	0.40
2020	448,874	45,067.65	10.04	935	2.07	0.21
2021	478,807	52,747.79	11.02	1,840	3.49	0.38
2022	572,111	52,567.88	9.19	833	1.59	0.15
2023	651,747	52,285.00	8.02	2,316	4.43	0.36
2024	698,537	46,097.73	6.60	697	1.51	0.10

# MARKET EVOLUTION SINCE INCEPTION

## LISTINGS ON THE DEM

	Listing Date	Issue Price (Rs)	Closing Price (Rs) on First Trading day	Number of shares Listed	
1	Swan Life Ltd ( Ex The Anglo-Mauritius Assurance Society Limited)	04-Aug-06	230	230	2,500,000
2	Indian Ocean International Bank Limited	04-Aug-06	37	37	16,884,185
3	ABC Motors Company Limited	04-Aug-06	13.60	13.60	6,175,680
4	Associated Commercial Co Ltd	04-Aug-06	21	21	1,142,962
5	Compagnie Immobiliere Limitee	04-Aug-06	140	140	266,400
6	Robert Le Maire Limited	04-Aug-06	86	86	2,176,380
7	Forges Tardieu Limited	04-Aug-06	165	165	1,920,000
8	Livestock Feed Limited (Ordinary)	04-Aug-06	18.50	17.50	10,500,000
9	Livestock Feed Limited ( Preference)	04-Aug-06	17.30	17.30	353,659
10	Les Moulins de la Concorde Ltee (Ordinary)	04-Aug-06	145	145	1,800,000
11	Les Moulins de la Concorde Ltee ( Preference)	04-Aug-06	242	242	300,000
12	Mauritius Cosmetics Limited	04-Aug-06	29.50	29.50	4,500,000
13	Margarine Industries Limited	04-Aug-06	180	180	300,239
14	Mauritius Secondary Industries Ltd	04-Aug-06	15.50	15.50	800,000
15	Paper Converting Company Limited	04-Aug-06	26	26	1,500,000
16	Quality Beverages Limited	04-Aug-06	12.70	12.70	7,110,584
17	Soap & Allied Industries Limited	04-Aug-06	16	16	4,101,300
18	Vital Water Bottling Co Ltd	04-Aug-06	32	32	2,196,108
19	Alma Investments Company Limited	04-Aug-06	63.50	63.50	7,331,296
20	The Black River Investments Company Limited	04-Aug-06	1,550	1,550	550,000
21	Knowledge Economies Ltd	04-Aug-06	52.50	53.00	2,110,105
22	Ciel Investment Ltd	04-Aug-06	6.30	6.30	484,221,420
23	Deep River Investment Limited	04-Aug-06	1,800	1,800	342,665
24	ENL Investment Ltd	04-Aug-06	17.50	18.50	73,504,345
25	ENL Ltd	04-Aug-06	440	440	299,800
26	Excelsior United Development Companies Limited	04-Aug-06	5.05	5.45	121,453,252
27	The Bee Equity Partners Ltd (Ex FIDES)	04-Aug-06	29.50	31.50	8,820,947
28	Medine Shares Holding Company Limited (Ordinary)	04-Aug-06	1150	1150	604,367
29	Medine Shares Holding Company Limited (Preference)	04-Aug-06	975	975	42,424
30	Phoenix Investment Company Limited	04-Aug-06	48.40	48.40	5,685,387
31	The Union Flacq Sugar Estates Company Limited	04-Aug-06	3500	3500	167,516
32	Constance Hotels Services Limited	04-Aug-06	49.90	50.00	63,964,454
33	Southern Cross Tourist Company Limited	04-Aug-06	3.60	3.60	94,068,000
34	Tropical Paradise Co Ltd (Ordinary)	04-Aug-06	8	8	25,000,000
35	Tropical Paradise Co Ltd (Preference)	04-Aug-06	108	108	750,000
36	Ciel Textile Ltd	04-Aug-06	14.50	14.70	101,807,589
37	Hotelest Limited	04-Aug-06	39.40	39.40	32,621,872
38	Medical And Surgical Centre Limited	04-Aug-06	1.50	1.50	256,473,370
39	Mauritius Freeport Development Company Ltd	04-Aug-06	16	16	90,000,000
40	SIT Land Holdings Option	04-Aug-06	9200	9200	20,956
41	Constance La Gaiete Company Limited	04-Aug-06	82	98	4,800,000
42	Deep River-Beau Champ Limited (Ordinary)	04-Aug-06	305	325	8,826,794
43	Deep River-Beau Champ Limited (Preference)	04-Aug-06	294	325	533,206
44	Flacq United Estates Limited	04-Aug-06	55	64	24,171,049

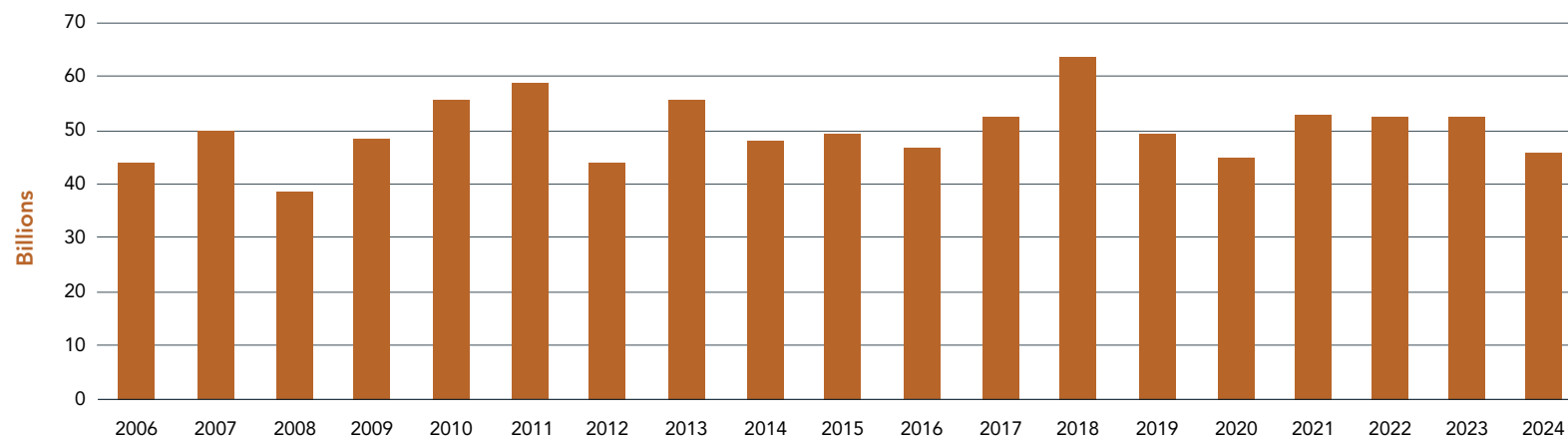
# MARKET EVOLUTION SINCE INCEPTION

## LISTINGS ON THE DEM

	Listing Date	Issue Price (Rs)	Closing Price (Rs) on First Trading day	Number of shares Listed
45 Medine Limited (Ordinary)	04-Aug-06	70	84	86,940,600
46 Medine Limited (Preference)	04-Aug-06	68	74	18,059,400
47 Union Flacq Ltd	04-Aug-06	9	9	18,900,000
48 RHT Holding Ltd	04-Aug-06	149	149	2,432,430
49 United Bus Service Ltd	04-Aug-06	3.55	3.55	4,969,489
57 Rainbow Insurance Co Ltd	10-Jan-07	9	9	2,500,000
58 United Investment Ltd	10-Jan-07	80	80	480,000
59 Chemco Ltd	29-Jan-07	8.50	8.50	6,208,722
60 Bychemex Ltd	29-Jan-07	12.60	12.60	5,000,000
61 Morning Light Co Ltd	29-Jan-07	7.55	7.55	45,961,580
62 Flic en Flac Ltd	21-Feb-07	375	375	600,000
63 Les Gaz Industriels Ltd	16-Apr-07	90.00	90.00	2,611,392
64 COVIFRA Ltee	25-Apr-08	10.00	15.00	56,610,000
65 Ascencia Ltd (Class A Shares)	23-Dec-08	1020.00	1020.00	443,206
66 Société de Développement Industriel et Agricole Limitée	21-Jun-10	1.35	2.00	210,002,430
67 United Investment Ltd - Bond	03-Jul-12	100.00	107.97	4,000,000
68 Bharat Telecom Ltd	11-Jul-12	50.00	56.00	16,742,000
69 BlueLife Limited	01-Jul-13	5.85	7.70	146,687,586
70 Ascencia Ltd (Class B Shares)	28-Oct-13	1,500.00	1,500.00	1,048,415
71 Cargo Hub Capital Ltd	23-Jan-14	EUR 30	EUR 30	1,128,000
72 Shumba Energy Ltd	04-Apr-14	USD 0.12	USD 0.12	170,886,080
73 Novus Properties Ltd	20-Oct-14	8.76	8.76	13,778,700
74 MFD Group Ltd	09-Mar-15	11.35	11.35	150,000,000
75 Attitude Property Ltd	21-Sep-15	10.00	10.70	160,017,092
76 Ascencia Ltd (Preference)	21-Dec-15	13.20	13.20	26,335,014
77 Ascencia Ltd - Bond	21-Dec-15	12.00	12.00	17,556,676
78 ABC Banking Corporation Ltd	18-Jan-16	15.00	18.00	57,303,904
79 ABC Motors Company Limited - Notes	29-Jan-16	25,000.00	25,000.00	8,000
80 United Investment Ltd - Bond	11-Apr-16	100.00	99.99	4,250,000
81 Kolos Cement Ltd	19-Feb-18	80.00	95.00	27,000,000
82 Zentosa Capital Limited	09-Mar-18	USD 1.00	USD 1.00	124,709,900
83 Lavastone Ltd	28-Dec-18	3.00	3.50	680,523,310
84 New Futures Ltd (Bonds)	08-Nov-18	EUR 1000	EUR 1016.49	15,100
85 Semaris Ltd	16-Sep-19	4.25	4.18	548,982,130
86 Happy World Property Ltd	18-Dec-20	9.50	9.50	40,000,000
87 Velogic Holding Company Limited	15-Dec-21	25.00	25.00	93,515,565
88 Oceanarium (Mauritius) Ltd	07-Feb-22	10.00	15.00	57,300,000
89 MIWA Sugar Limited (USD)	28-Nov-22	0.46	0.38	318,492,120
90 Abacus Royal Estate Ltd - Bond	28-Jun-23	1,000.00	1,000.00	200,000
91 Cavell Touristic Investments Ltd	08-Dec-23	36.00	36.00	11,259,388

# MARKET EVOLUTION SINCE INCEPTION

## EVOLUTION OF MARKET CAPITALISATION (2006 - 2024)



## EVOLUTION OF MARKET INDICES (2006 - 2024)

INDICES	2006	2007	2008	2009	2010	2011	2012	2013	2014	2015
DEMEX	138.53	147.61	112.88	136.68	148.64	153.22	147.55	173.74	202.89	199.34
DEMTRI (RS)	140.26	153.33	120.56	150.17	166.93	174.83	173.32	210.05	251.21	251.66
DEMTRI (USD)	132.50	166.11	117.26	153.59	169.80	185.97	177.38	217.58	247.42	218.05

INDICES	2016	2017	2018	2019	2020	2021	2022	2023	2024
DEMEX	203.36	229.71	235.44	234.80	213.83	305.67	266.61	267.46	236.06
DEMTRI (RS)	265.70	309.80	328.08	339.60	314.94	459.44	412.53	427.28	391.39
DEMTRI (USD)	232.53	290.82	301.88	294.37	249.96	335.34	297.47	306.68	263.13

# MARKET AT A GLANCE

## DEM AT A GLANCE 2024

Date	DEMEX*	DEMTRI* (RS)	DEMTRI* (US \$)	Market Capitalisation (Rs)*	Traded Value (Rs)	Traded Volume	No. of Trading Sessions
JANUARY	267.78	428.53	301.71	52,347,753,674.94	27,567,125.08	3,425,862	18
FEBRUARY	267.23	429.10	296.66	52,240,177,778.59	41,091,999.04	3,837,355	19
MARCH	256.79	413.38	281.26	50,328,154,669.12	34,604,363.74	4,356,381	19
APRIL	258.79	417.65	284.63	50,812,825,928.46	33,061,308.13	4,688,934	19
MAY	244.87	397.30	271.54	47,958,786,993.87	125,648,458.85	10,389,018	22
JUNE	241.96	393.06	263.77	47,388,315,630.49	17,552,902.98	4,459,213	20
JULY	238.83	392.32	266.01	46,774,491,368.41	26,035,481.76	6,003,819	23
AUGUST	231.97	381.78	260.87	45,432,007,049.65	40,570,402.49	5,235,163	21
SEPTEMBER	232.89	383.93	264.67	45,510,591,879.17	216,024,733.99	26,396,182	21
OCTOBER	232.81	385.03	263.95	45,495,665,771.19	35,632,814.80	3,962,831	22
NOVEMBER	236.00	391.15	266.37	46,119,010,227.31	58,596,583.90	3,684,195	21
DECEMBER	236.06	391.39	263.13	46,097,727,329.82	40,241,176.49	4,729,251	21
				<b>TOTAL</b>	<b>696,627,351.25</b>	<b>81,168,204</b>	<b>246</b>

Note \* : Month-end figures

### DEMEX/DEMTRI (RS) YEAR 2024





# MARKET AT A GLANCE

## SUMMARY FINANCIAL DATA FOR LISTED SECURITIES 2024

SECURITIES EQUITY BOARD	Nominal Value (Rs)	Price (Rs) 29.12.23	Price (Rs) 31.12.24	% Change in Price	E.P.S (Rs) 29.12.23	E.P.S (Rs) 31.12.24	P.E.R 29.12.23	P.E.R 31.12.24	D.P.S (Rs) 29.12.23	D.P.S (Rs) 31.12.24	Dividend Yield (%) 29.12.23	Dividend Yield (%) 31.12.24	Net Asset Value (NAV) 29.12.23	Net Asset Value (NAV) 31.12.24	PRICE/NAV Ratio 29.12.23	PRICE/NAV Ratio 31.12.24	Financial Year Ended
<b>BANKS, INSURANCE &amp; OTHER FINANCE</b>																	
ABC Banking Corporation Ltd	10.00	19.00	20.05	5.53	3.91	-	4.86	5.93	-	-	-	-	30.12	32.47	0.63	0.62	Jun-24
Swan Life Ltd	10.00	1,665.00	1,515.00	(9.01)	230.08	69.00	7.24	6.58	69.00	69.00	4.14	4.55	-	-	-	-	Dec-22
<b>COMMERCE</b>																	
ABC Motors Company Ltd	10.00	112.00	105.00	(6.25)	14.72	1.60	7.61	13.38	1.60	1.60	1.43	1.52	217.41	222.01	0.52	0.47	Jun-24
Associated Commercial Co Ltd	10.00	199.00	204.50	2.76	63.93	4.70	3.11	3.39	4.50	4.70	2.26	2.30	514.22	571.97	0.39	0.36	Jun-24
Compagnie Immobiliere Ltée	10.00	25.45	23.00	(9.63)	1.16	0.86	21.94	10.00	0.92	0.86	3.61	3.74	24.71	26.09	1.03	0.88	Dec-23
<b>INDUSTRY</b>																	
Les Gaz Industriels Ltée	10.00	43.50	52.75	21.26	5.95	-	7.31	44.70	3.00	-	6.90	-	95.49	94.81	0.46	0.56	Jun-24
Kolos Cement Ltd	-	210.00	150.00	(28.57)	1.92	3.30	109.38	258.62	4.22	3.30	2.01	2.20	38.44	14.27	5.46	10.51	Dec-23
Livestock Feed Ltd (Ordinary)	10.00	17.50	19.15	9.43	2.25	0.47	7.78	5.07	0.43	0.47	2.46	2.45	29.41	33.15	0.60	0.58	Jun-24
Livestock Feed Ltd (Preference)	10.00	29.30	27.30	(6.83)	-	1.20	-	-	1.20	1.20	4.10	4.40	-	-	-	-	Jun-24
Les Moulins de la Concorde Ltée (Ordinary)	100.00	93.00	88.00	(5.38)	17.40	3.75	5.34	5.39	3.50	3.75	3.76	4.26	217.11	219.81	0.43	0.40	Jun-24
Les Moulins de la Concorde Ltée (Preference)	100.00	412.75	400.00	(3.09)	-	20.00	-	-	20.00	20.00	4.85	5.00	-	-	-	-	Jun-24
Mauritius Cosmetics Ltd	10.00	19.90	16.90	(15.08)	0.16	0.20	126.35	8.94	0.10	0.20	0.50	1.18	22.94	31.70	0.87	0.53	Dec-23
Mauritius Secondary Industries Ltd	10.00	36.70	39.00	6.27	3.95	1.00	9.29	7.33	1.00	1.00	2.72	2.56	102.47	109.34	0.36	0.36	Jun-24
Paper Converting Company Ltd	10.00	16.00	15.30	(4.38)	0.96	0.25	16.75	16.45	0.25	0.25	1.56	1.63	15.82	36.29	1.01	0.42	Dec-23
Quality Beverages Ltd	10.00	11.00	10.75	(2.27)	1.44	-	7.64	8.60	-	-	-	-	19.14	21.22	0.57	0.51	Dec-23
<b>INVESTMENTS</b>																	
Excelsior United Development Companies Ltd	1.00	15.10	16.00	5.96	1.45	1.10	10.41	11.85	1.15	1.10	7.62	6.88	16.80	17.55	0.90	0.91	Jun-24
Miwa Sugar Limited (USD)	-	0.35	0.22	-	0.04	0.01	8.75	8.80	0.02	0.01	5.14	4.55	0.06	0.05	5.56	4.58	Jun-24
Phoenix Investment Company Ltd	10.00	313.00	409.00	30.67	39.53	19.67	7.92	6.92	13.93	19.67	4.45	4.81	322.08	362.34	0.97	1.13	Jun-24
RHT Holding Ltd	2.00	20.00	17.00	(15.00)	-	0.70	-	7.52	0.40	0.70	2.00	4.12	59.00	68.00	0.34	0.25	Jun-24
United Investment Ltd	1.00	4.08	3.30	(19.12)	1.22	-	3.34	47.14	-	-	-	-	8.18	8.25	0.50	0.40	Jun-23
<b>LEISURE &amp; HOTELS</b>																	
Cavell Touristic Investments Ltd	-	36.00	21.00	-	-	-	-	-	-	-	-	-	-	-	-	-	-
Constance Hotels Services Ltd	10.00	20.50	19.00	(7.32)	2.05	-	10.00	7.36	-	-	-	-	40.65	44.62	0.50	0.43	Dec-23
Morning Light Ltd	10.00	18.00	15.00	(16.67)	1.09	-	16.51	-	-	-	-	-	22.66	24.04	0.79	0.62	Dec-23
Southern Cross Tourist Company Ltd	-	3.85	3.10	(19.48)	0.30	-	12.83	2.92	-	-	-	-	11.94	9.46	0.32	0.33	Dec-23
Tropical Paradise Co Ltd (Ordinary)	-	3.30	3.40	3.03	-	-	-	6.54	-	-	-	-	10.95	11.85	0.30	0.29	Jun-24
Tropical Paradise Co Ltd (Preference)	100.00	181.50	181.25	(0.14)	-	-	-	-	-	-	-	-	-	-	-	-	Jun-24

# MARKET AT A GLANCE

## SUMMARY FINANCIAL DATA FOR LISTED SECURITIES 2024

SECURITIES EQUITY BOARD	Nominal Value (Rs)	Price (Rs) 29.12.23	Price (Rs) 31.12.24	% Change in Price	E.P.S (Rs) 29.12.23	E.P.S (Rs) 31.12.24	P.E.R 29.12.23	P.E.R 31.12.24	D.P.S (Rs) 29.12.23	D.P.S (Rs) 31.12.24	Dividend Yield (%) 29.12.23	Dividend Yield (%) 31.12.24	Net Asset Value (NAV) 29.12.23	Net Asset Value (NAV) 31.12.24	PRICE/NAV Ratio 29.12.23	PRICE/NAV Ratio 31.12.24	Financial Year Ended
<b>OTHERS</b>																	
Compagnie Des Villages De L'Isle De France Ltée	10.00	28.50	31.00	8.77	3.52	2.10	8.10	9.39	2.10	2.10	7.37	6.77	29.44	31.62	0.97	0.98	Jun-24
Hotelest Ltd	10.00	21.00	16.75	(20.24)	2.00	-	10.50	6.59	-	-	-	-	40.47	44.40	0.52	0.38	Dec-23
C-Care (Mauritius) Ltd	-	10.50	8.50	(19.05)	0.56	0.38	18.75	14.91	0.34	0.38	3.24	4.47	2.12	2.36	4.96	3.60	Jun-24
MFD Group Ltd	-	13.60	11.00	(19.12)	0.47	0.47	28.94	30.56	0.43	0.47	3.16	4.27	7.69	7.56	1.77	1.46	Dec-23
Oceanarium (Mauritius) Ltd	-	6.50	4.00	-	-	-	-	-	-	-	-	-	9.60	8.73	0.68	0.46	Jun-24
SIT Land Holdings Options	15000.00	6,495.00	6,085.00	(6.31)	-	-	-	-	-	-	-	-	-	-	-	-	Jun-24
<b>PROPERTY DEVELOPMENT</b>																	
Attitude Property Ltd	-	11.15	10.85	(2.69)	0.79	0.89	14.11	17.79	0.99	0.89	8.88	8.20	13.00	12.63	0.86	0.86	Jun-24
Happy World Property Ltd	-	10.20	9.00	(11.76)	0.36	0.06	28.33	25.00	-	0.06	-	0.63	11.35	11.35	0.90	0.79	Jun-23
Lavastone Ltd	-	1.53	1.50	(1.96)	0.28	0.08	5.46	6.00	0.07	0.08	4.58	5.33	4.18	4.40	0.37	0.34	Sep-24
Novus Properties Ltd	-	7.00	8.50	21.43	1.61	0.55	4.35	10.24	0.40	0.55	5.71	6.47	11.60	11.88	0.60	0.72	Jun-24
Semaris Ltd	-	0.74	0.86	16.22	-	-	-	-	-	-	-	-	6.45	6.24	0.11	0.14	Jun-24
<b>SUGAR</b>																	
Constance La Gaiete Company Ltd	25.00	135.50	138.25	2.03	1.29	7.00	105.04	1.25	5.00	7.00	3.69	5.06	101.30	200.49	1.34	0.69	Dec-23
The Union Sugar Estates Co Ltd	-	105.00	115.00	9.52	3.75	1.59	28.00	7.04	1.59	1.59	1.51	1.38	91.06	193.64	1.15	0.59	Dec-23
<b>TRANSPORT</b>																	
United Bus Service Ltd	10.00	42.60	41.60	(2.35)	12.69	1.00	3.36	5.72	1.00	1.00	2.35	2.40	11.50	6.63	3.71	6.27	Jun-24
Velogic Holding Company Limited		22.50	14.50	(35.56)	2.83	1.13	7.95	6.90	1.20	1.13	5.33	7.79	18.88	20.38	1.19	0.71	Jun-24

# COMPANIES' PERFORMANCE IN 2024

## MARKET CAPITALISATION (RS) YEAR END

Rank	Securities	Rs (billion)	% of Total Market Capitalisation
1	C-Care (Mauritius) Ltd	4.8	10.5
2	Kolos Cement Ltd	4.1	8.8
3	Swan Life Ltd	4.0	8.7
4	Miwa Sugar Limited	3.3	7.2
5	Phoenix Investment Company Ltd	2.3	5.0
6	The Union Sugar Estates Co Ltd	2.2	4.7
7	Compagnie Des Villages De L'Isle De France Ltée	2.1	4.6
8	Constance Hotels Services Ltd	2.1	4.5
9	Excelsior United Development Companies Ltd	1.9	4.2
10	Livestock Feed Ltd (Ordinary)	1.8	3.9

## TURNOVER (RS)

Rank	Securities	Rs(million)	% of Total Market Turnover
1	United Investments Ltd	178.4	25.6
2	Cavell Touristic Investments Ltd	81.5	11.7
3	Miwa Sugar Limited	65.1	9.3
4	Phoenix Investment Company Ltd	55.0	7.9
5	Swan Life Ltd	38.1	5.5
6	Livestock Feed Ltd	35.7	5.1
7	ABC Banking Corporation Ltd	32.9	4.7
8	Excelsior United Development Companies Ltd	29.0	4.2
9	Attitude Property Ltd	25.6	3.7
10	Novus Properties Ltd	21.7	3.1

## VOLUME TRADED

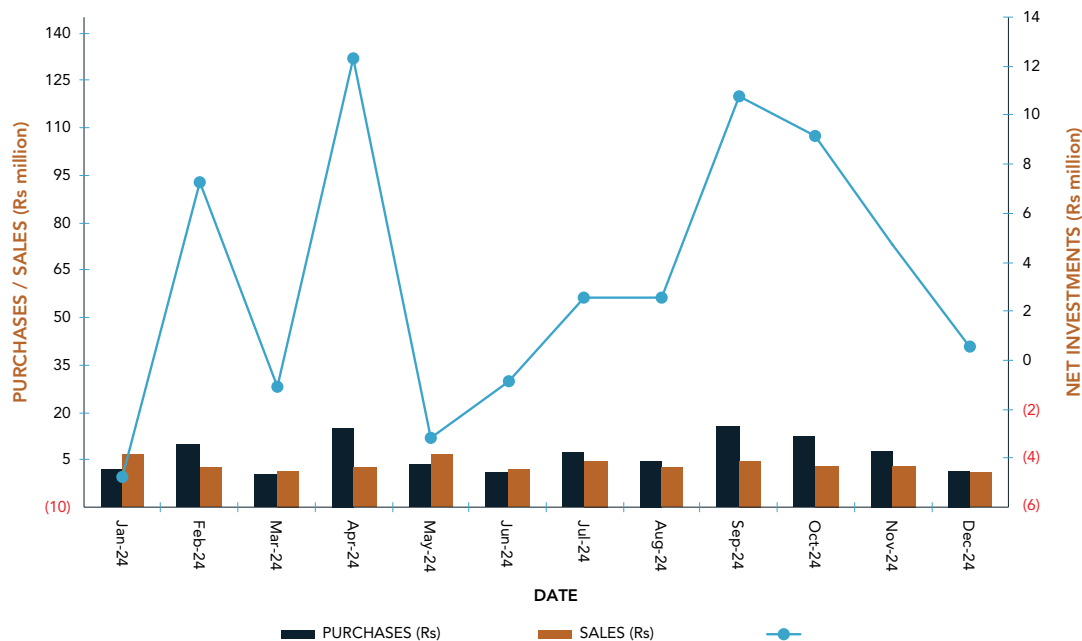
Rank	Securities	No of Shares(M)	% of Volume Traded
1	United Investments Ltd	23.1	28.5
2	Semaris Ltd	19.4	23.9
3	Lavastone Ltd	12.6	15.6
4	Miwa Sugar Limited	5.8	7.1
5	Novus Properties Ltd	3.1	3.8
6	Cavell Touristic Investments Ltd	2.4	3.0
7	Attitude Property Ltd	2.4	2.9
8	Livestock Feed Ltd	2.0	2.4
9	Tropical Paradise Co Ltd	1.9	2.3
10	Excelsior United Development Companies Ltd	1.9	2.3

# FOREIGN INVESTMENT

## FOREIGN INVESTMENTS IN 2024

MONTH	PURCHASES(Rs)	SALES(Rs)	NET INVESTMENTS
Jan-2024	1,934,547.50	6,700,158.89	-4,765,611.39
Feb-2024	9,986,406.85	2,729,976.41	7,256,430.44
Mar-2024	629,207.00	1,734,571.00	-1,105,364.00
Apr-2024	14,972,654.45	2,678,304.90	12,294,349.55
May-2024	3,506,747.67	6,660,844.59	-3,154,096.92
Jun-2024	1,106,758.05	1,980,580.76	-873,822.71
Jul-2024	7,068,646.61	4,542,951.44	2,525,695.17
Aug-2024	4,845,712.00	2,317,099.23	2,528,612.77
Sep-2024	15,435,118.68	4,675,739.60	10,759,379.08
Oct-2024	12,380,280.00	3,232,036.81	9,148,243.19
Nov-2024	7,690,407.29	2,973,600.39	4,716,806.90
Dec-2024	1,313,623.00	749,989.53	563,633.47
<b>TOTAL</b>	<b>80,870,109.10</b>	<b>40,975,853.55</b>	<b>39,894,255.55</b>

### DEM FOREIGN INVESTMENT IN 2024



### ACTIVITY ANALYSIS (DEM DOMESTIC AND FOREIGN INVESTMENTS)

#### VOLUME

ACTIVITY ANALYSIS	2020	2021	2022	2023	2024
Domestic Activity	91.53%	99.08%	91.10%	97.40%	91.25%
Foreign Activity	8.47%	0.92%	8.90%	2.60%	8.75%
<b>Total</b>	<b>100%</b>	<b>100%</b>	<b>100%</b>	<b>100%</b>	<b>100%</b>

#### TURNOVER

ACTIVITY ANALYSIS	2020	2021	2022	2023	2024
Domestic Activity	95.44%	98.52%	93.92%	92.60%	89.67%
Foreign Activity	4.56%	1.48%	6.08%	7.40%	10.33%
<b>Total</b>	<b>100%</b>	<b>100%</b>	<b>100%</b>	<b>100%</b>	<b>100%</b>



**THE STOCK EXCHANGE OF MAURITIUS LTD**

(Member of the World Federation of Exchanges)